

Exchange Server 2010 Installation und Konfiguration

Systemvoraussetzungen

Windows Server 2008 oder Windows Server 2008 R2 Beta

4 GB RAM (mein System laeuft virtuell mit 2 GB RAM)

NTFS-Datei System

200 MB freier Speicherplatz auf der Systempartition

500 MB für jedes Unified Messaging (UM)-Sprachpaket, welches installiert werden soll

1. Install [Windows Remote Management \(WinRM \) 2.0 Community Technology Preview 3 \(CTP3\)](#).
2. Install [Windows PowerShell V2 CTP3](#).
3. Install the update for the Microsoft Management Console (MMC) in Windows Server 2008. See Microsoft Knowledge Base article 951725 [An update that extends the mechanism for displaying snap-in context Help topics is available for the MMC in Windows Server 2008](#).
4. Install the extensions for [ASP.NET AJAX 1.0](#).
5. Install the [2007 Office System Converter: Microsoft Filter Pack](#).
6. ServerManagerCmd -i Web-Server
7. ServerManagerCmd -i Web-ISAPI-Ext
8. ServerManagerCmd -i Web-Metabase
9. ServerManagerCmd -i Web-Lgcy-Mgmt-Console
10. ServerManagerCmd -i Web-Basic-Auth
11. ServerManagerCmd -i Web-Digest-Auth
12. ServerManagerCmd -i Web-Windows-Auth
13. ServerManagerCmd -i Web-Dyn-Compression
14. ServerManagerCmd -i NET-HTTP-Activation
15. ServerManagerCmd -I RPC-over-HTTP-proxy

Links

Voraussetzungen

[http://technet.microsoft.com/en-us/library/bb691354\(EXCHG.140\).aspx](http://technet.microsoft.com/en-us/library/bb691354(EXCHG.140).aspx)

Hauptseite

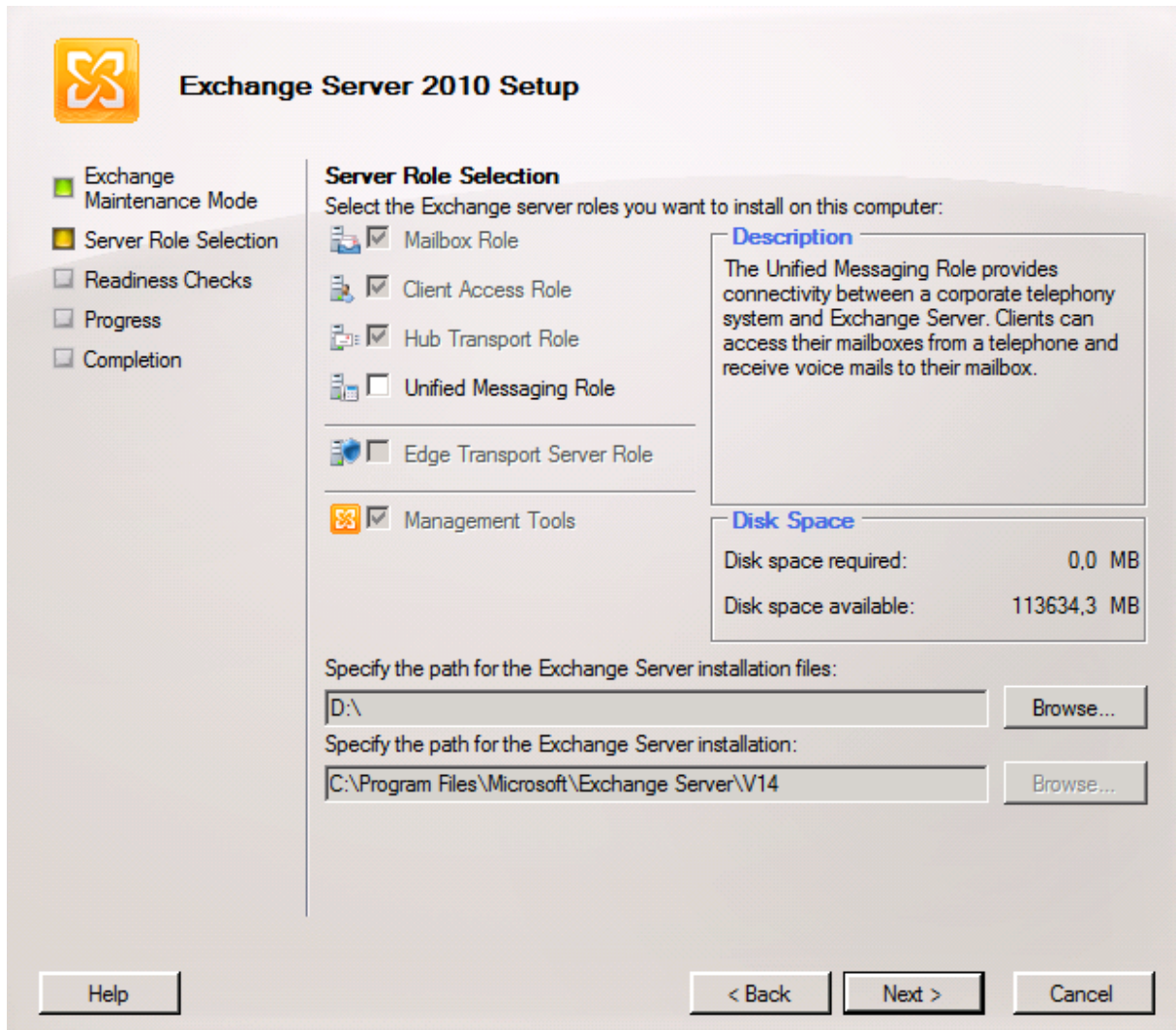
<http://www.microsoft.com/exchange/2010/en/us/default.aspx>

Eval

<http://technet.microsoft.com/de-de/evalcenter/dd185495.aspx>

Installation

Da hat sich nicht viel geändert. Man kann jetzt vor der Installation schon die einzelnen Sprachpakete laden, danach die üblichen Rollen.



Nach einer 3/4 Stunde war die Installation auf meinem Notebook erledigt.

Konfiguration

Exchange 2010 Finalize Deployment

Organization Summary

Database Summary

Total databases:	1	Manage databases
Total database copies:	1	
Total unhealthy database copies:	0	

License Summary

Standard CALs in Use:	1	
Enterprise CALs in Use:	1	

[View legal information regarding the Client Access License \(CAL\)](#)

Servers Summary

Total servers:	1	Manage servers
Total Exchange 2010 servers:	1	
Total Exchange 2007 servers:	0	
Total Exchange 2003 servers:	0	
Total Mailbox servers:	1	
Total Client Access servers:	1	
Total Hub Transport servers:	1	
Total Unified Messaging servers:	0	
Total servers that are unlicensed:	0	

Recipients Summary

Recipients Information

Total recipients:	1	Manage recipients
Total mailboxes:	1	
Total distribution groups:	0	
Total dynamic distribution groups:	0	
Total mail contacts:	0	
Total mail users:	0	
Total legacy mailboxes:	0	

Feature Usage Information

Total messaging records management users:	0	
Total journaling users:	0	
Total Outlook Web Access users:	1	
Total ActiveSync users:	1	
Total Unified Messaging users:	0	
Total MAPI users:	1	
Total POP3 users:	1	
Total IMAP4 users:	1	

Last updated: 16.04.2009 11:13:22. [Click here to access the latest data.](#)
 The data marked with a yellow exclamation mark may be inaccurate due to errors while gathering data.

Sie haben Post (Post Installation Tasks)

Exchange 2010 Post-Installation Tasks

Post-Installation Tasks

After you complete a new installation of Exchange 2010 or after you add an additional Exchange 2010 server role to an existing Exchange 2010 server, you should complete the post-installation tasks. Because each server role offers several features that you can configure for your organization, make sure that you complete the post-installation tasks for each server role that you install.


See the following topics for information about post-installation tasks:

- Finalize Deployment Tasks**
These tasks are required to complete the deployment of your Exchange 2010 organization. The tasks apply to features that are enabled by default but require additional configuration.
- End-to-End Scenario Tasks**
This topic provides a check list of the recommended tasks to perform after you deploy Exchange 2010.
- Additional Post-Installation Tasks**
These tasks include optional steps for configuring Exchange 2010 features. Also provided is a checklist of the optional tasks to perform after you install Exchange 2010.

Community, Community Community

Finalize Deployment | Post-Installation Tasks | **Community and Feedback**

Exchange Community and Feedback

 Recent Exchange Technical Articles on Microsoft TechNet ⌵

[Overview of Namespace Planning](#)
Dienstag, 3. Juni 2008 20:31


[TechNet Magazine: Secure E-Mail Using Digital Certificates](#)
Dienstag, 3. Juni 2008 20:24

[Free E-Learning: Introduction to Microsoft Exchange Server 2007 Unified Messaging](#)
Dienstag, 3. Juni 2008 20:23

[Outlook Anywhere Scalability with Outlook 2007, Outlook 2003, and Exchange 2007](#)
Dienstag, 13. Mai 2008 20:45

[Understanding Client Throttling](#)
Dienstag, 13. Mai 2008 20:34

[More...](#)

 Recent Posts on the Microsoft Exchange Team Blog ⌵

[Presenting Exchange Server 2010](#)
Mittwoch, 15. April 2009 02:39


[Named Properties, X-Headers, and You](#)
Montag, 6. April 2009 16:44

[Exchange Server 14 Ignite Workshops \(Dallas and Orlando, April 2009\)](#)
Donnerstag, 2. April 2009 18:38


[On the bleeding edge of Enterprise email server UI...](#)
Mittwoch, 1. April 2009 16:31

[Announcing the release of Exchange Server Remote Connectivity Analyzer](#)
Mittwoch, 25. März 2009 20:45


[More...](#)

 Customer Feedback Options ⌵

Join the Exchange Server Customer Experience Improvement Program to help us make Microsoft Exchange better for you. If you want to join the program, click the Customer Experience Improvement Program link below.

 Customer Experience Improvement Program

- [? Learn more about this program](#)
- [? Read the Privacy Statement](#)

 Help and Feedback ⌵

- [? Go to the Exchange Tech Center](#)
Visit the Exchange 2010 TechCenter to find help, learn how to use Exchange 2010, connect with community, and get the latest software updates.
- [? Submit suggestions or report bugs to the Microsoft Exchange team](#)

Verbindung mit anderen AD Forest mit installiertem Exchange herstellen

Add Exchange Forest [X]

Add a new Exchange on-premises or online forest to the management console.

Specify a friendly name for this Exchange forest:

Select the type of Exchange deployment:

Microsoft Exchange On-Premises

Microsoft Exchange Online

Administrator identity:

Password:

Remote PowerShell URL:

(Example: <https://server1.contoso.com/PowerShell/>)

OK Cancel

Exchange 2010 goes Multi Forest, Exchange Hosting und alles ist "Live"

Exchange Management Console

File Action View Help

Microsoft Exchange

- Microsoft Exchange On-Premises
 - Organization Configuration
 - Mailbox
 - Client Access
 - Hub Transport
 - Unified Messaging
 - Server Configuration
 - Mailbox
 - Client Access
 - Hub Transport
 - Unified Messaging
 - Recipient Configuration
 - Mailbox
 - Distribution Group
 - Mail Contact
 - Disconnected Mailbox
 - Mailbox Migration
 - Toolbox

Organization Configuration 0 objects

Federation Trusts | Sharing Relationships | Sharing Policies

Create Filter

Name	Current Certificate	Next Certificate	Previous Certificate
There are no items to show in this view.			

New Federation Trust

Create a federation trust with Windows Live to prepare for secure sharing of information with external Exchange Organizations. This requires a certificate for federation being deployed on all Exchange servers with client access and hub server role.

New Federation Trust

Completion

Name:

Certificate thumbprint:

Help < Back New Cancel

Actions

Organization Configuration

- Modify Configuration Domain Contr...
- New Federation Trust...
- Manage Federated Organization Id...
- New Sharing Relationship...
- New Sharing Policy...
- Export List...

View

- Refresh
- Help



New Sharing Relationship

- Introduction
- External Organization
- New Sharing Relationship
- Completion

Introduction

Create a sharing relationship with an external organization to enable secure information sharing using federation.

Name:

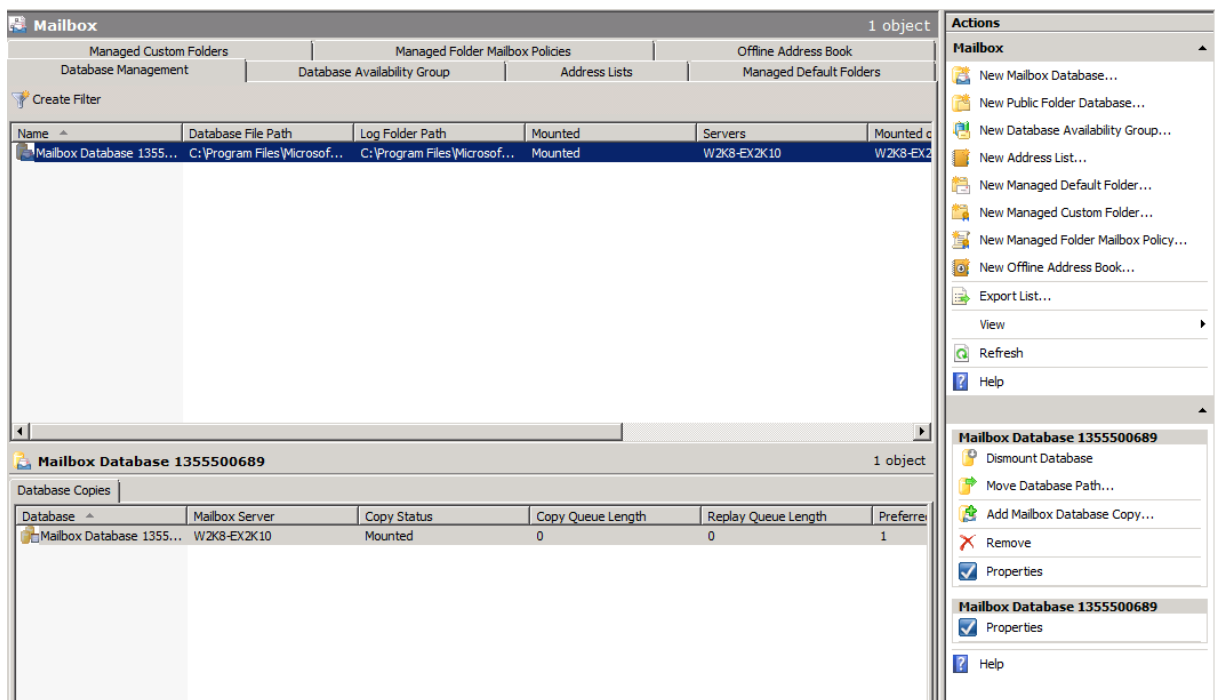
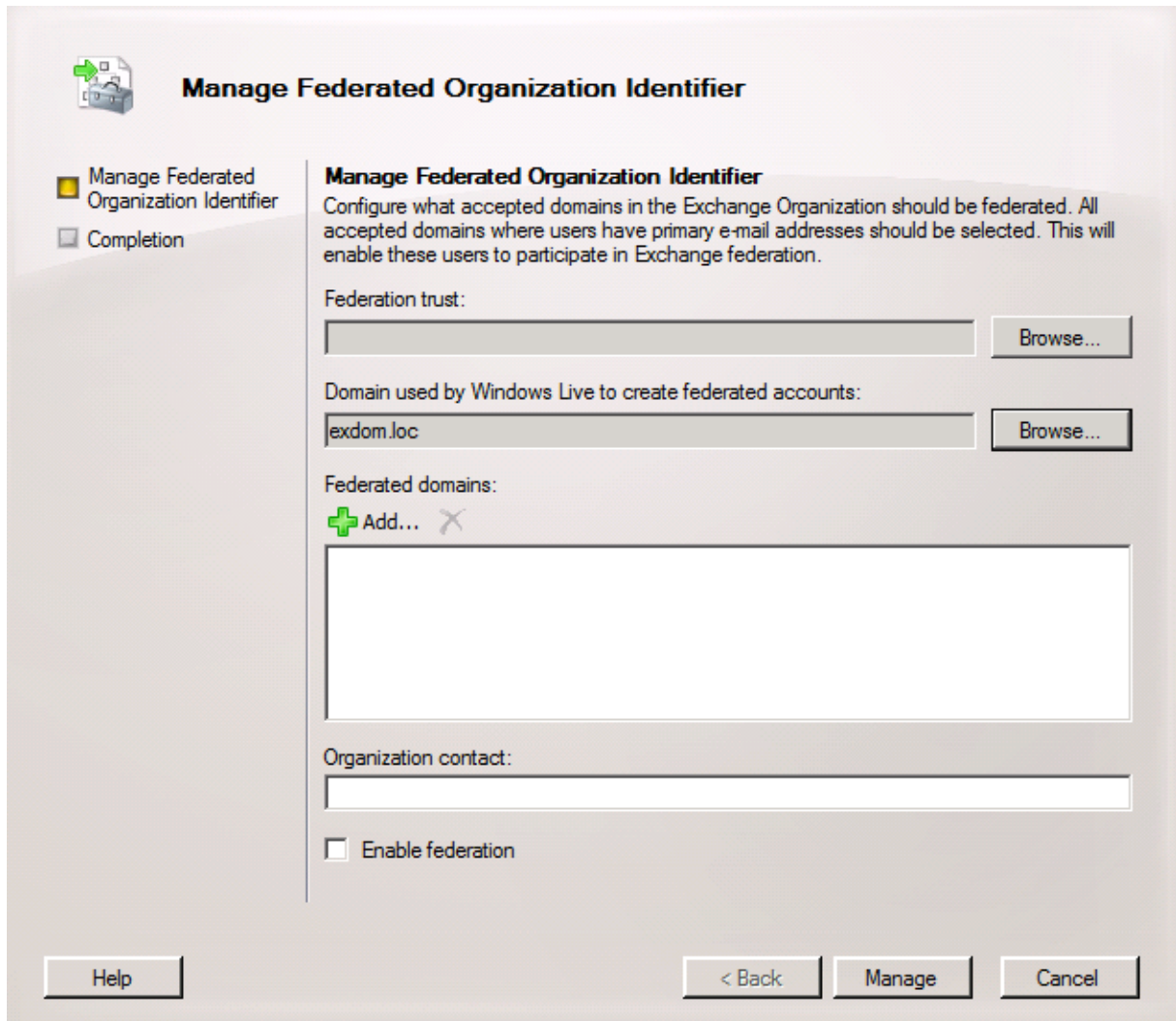
- Enable sharing
 - Enable free/busy information sharing

Help

< Back

Next >

Cancel



Cluster ohne Cluster?



New Database Availability Group

New Database Availability Group

Completion

New Database Availability Group

This wizard helps you create a new database availability group. A database availability group defines a set of servers that provide automatic database level recovery from database failure.

Database availability group name:

File share witness share (the UNC path for a share that Exchange automatically creates on your Hub Transport server):

Example: \\EXHUB1\DAG1FSW

File share witness directory (the directory that Exchange automatically creates on your Hub Transport server, which corresponds to the file share witness share):

Example: C:\DAG1FSW

Network encryption:

Network compression:

Disabled
Enabled
InterSubnetOnly
SeedOnly

Help

< Back

New

Cancel

nicht ganz, zumindest nicht hierfuer:

Manage Database Availability Group Membership

- Manage Database Availability Group Membership
- Completion

Completion

The wizard could not complete. Click Finish to close this wizard.

Elapsed time: 00:00:10

Summary: 1 item(s). 0 succeeded, 1 failed.

W2K8-EX2K10 Failed

Error:
Insufficient permissions to view the network shares on machine 'test'. Error code 53.

Warning:
Windows Failover Clustering is not yet installed. Some checks will not be run at this time.

Warning:
The operation wasn't successful because an error was encountered. More details may be found in log file "C:\Windows\TEMP\dagtask_2009-04-16_09-55-23_add-databaseavailabilitygroupserver.log".

Exchange Management Shell command attempted:
Add-DatabaseAvailabilityGroupServer -Identity 'test' -MailboxServer 'W2K8-EX2K10'

Elapsed Time: 00:00:10

Select Ctrl+C to copy the contents of this page.

Help
< Back
Finish
Cancel

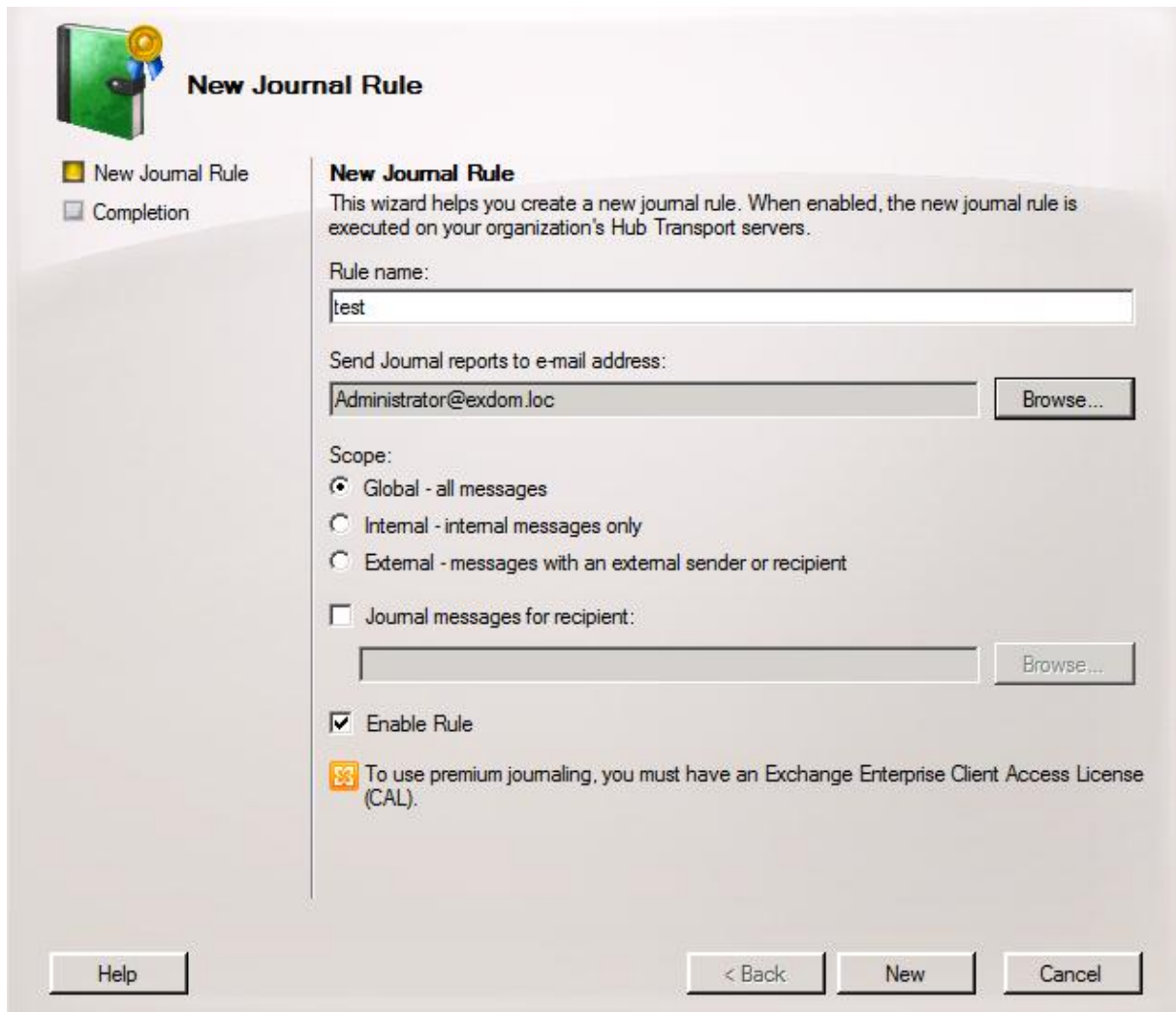
OWA

The screenshot shows the Exchange Management Console interface. The left-hand navigation pane is expanded to 'Client Access'. The main pane displays 'Outlook Web Access Mailbox Policies' with a 'Default' filter selected. A 'Default Properties' dialog box is open, showing the 'General' tab. The 'Public Computer File Access' section is active, with the following settings:

- Enable direct file access
- Customize direct file access:
- WebReady Document Viewing
 - Enable WebReady Document Viewing
 - Force WebReady Document Viewing when a converter is available
 - Specify supported document types:
- Access files from the following locations on remote file servers:
 - Windows File Shares
 - Windows SharePoint Services

The dialog box has 'OK', 'Cancel', 'Apply', and 'Help' buttons at the bottom.

Journal



New Journal Rule

New Journal Rule
 Completion

New Journal Rule
This wizard helps you create a new journal rule. When enabled, the new journal rule is executed on your organization's Hub Transport servers.


Rule name:

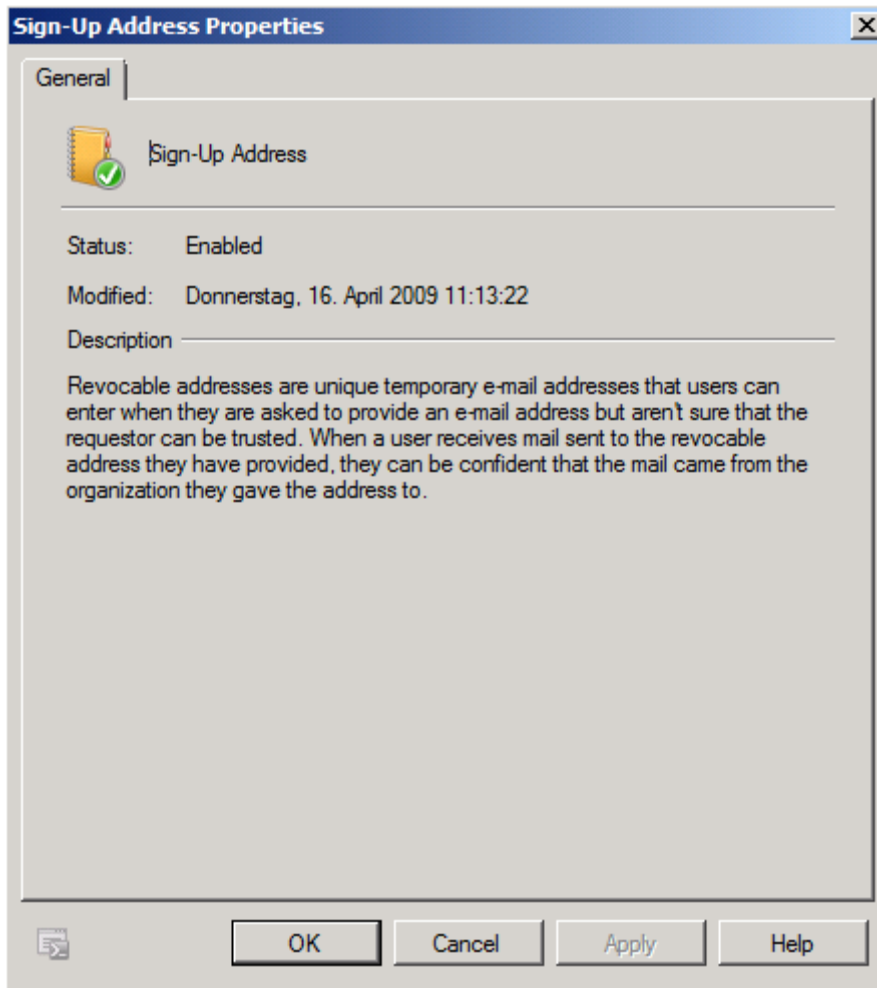
Send Journal reports to e-mail address:

Scope:
 Global - all messages
 Internal - internal messages only
 External - messages with an external sender or recipient

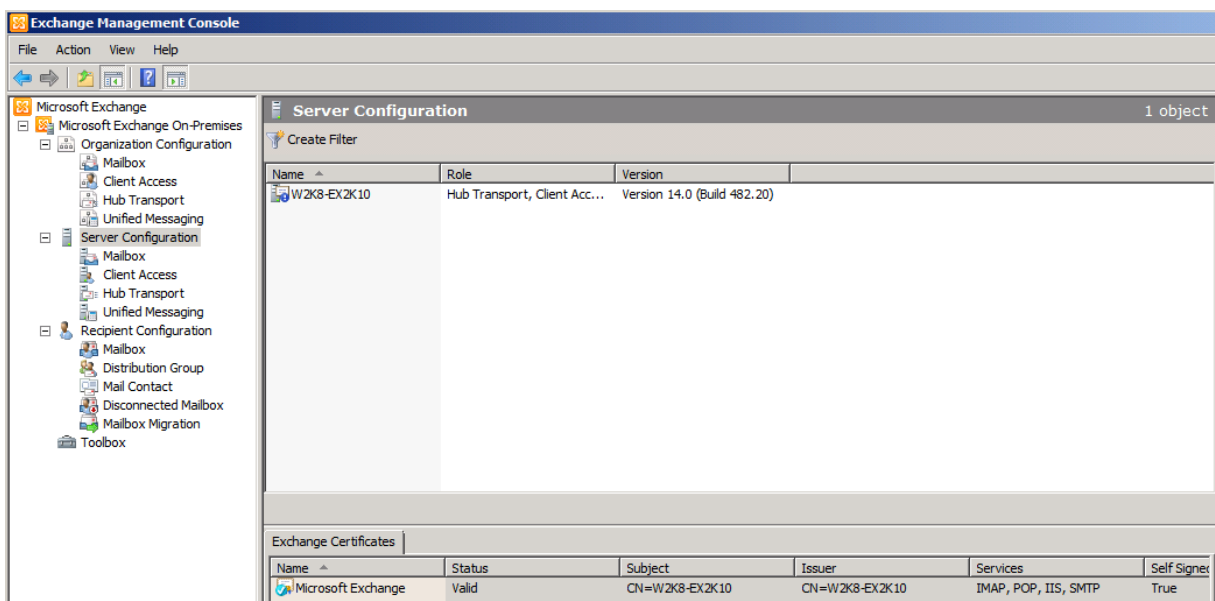
Journal messages for recipient:

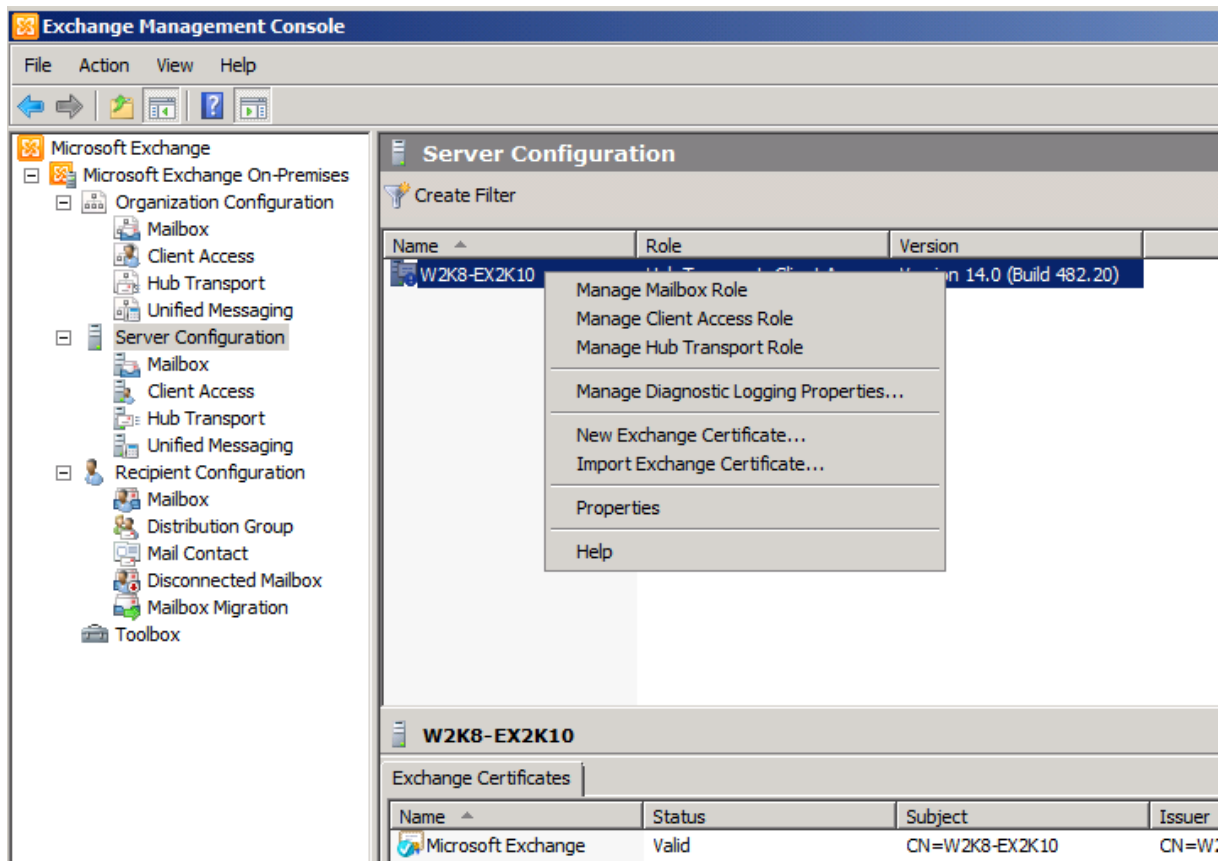
Enable Rule

 To use premium journaling, you must have an Exchange Enterprise Client Access License (CAL).



Juchu, Certs in der GUI zu sehen





Ja geil, endlich koennen auch Exchange Admins Zertifikate einrichten



Ueberarbeitetes Diag Logging



Manage Diagnostic Logging Properties

- Configure Server
- Diagnostic Logging Properties
- Completion

Configure Server Diagnostic Logging Properties

Select the services to configure then choose the logging level per category.

Update logging levels for services

W2K8-EX2K10

- MExchange ActiveSync
- MExchange ADAccess
- MExchange Antispam
- MExchange Anti-spam Update
- MExchange Assistants
- MExchange Autodiscover
- MExchange Availability
- MExchange Cluster
- MExchange Common
- MExchange Configuration Cmdlet - Control Panel
 - General
 - RBAC
- MExchange Configuration Cmdlet - Management Console
- MExchange Configuration Cmdlet - Management Shell
- MExchange Configuration Cmdlet - Management Web Service

Lowest Low Medium High Expert

Reset all services to default logging levels

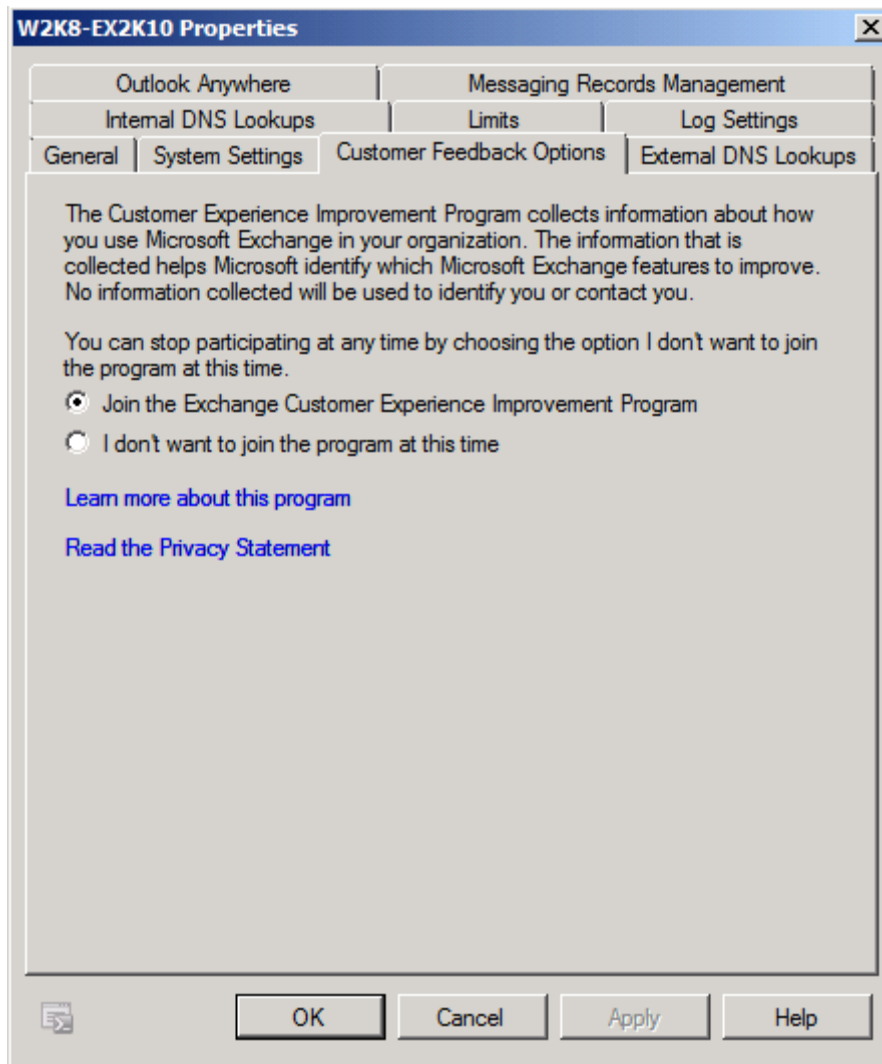
Help

< Back

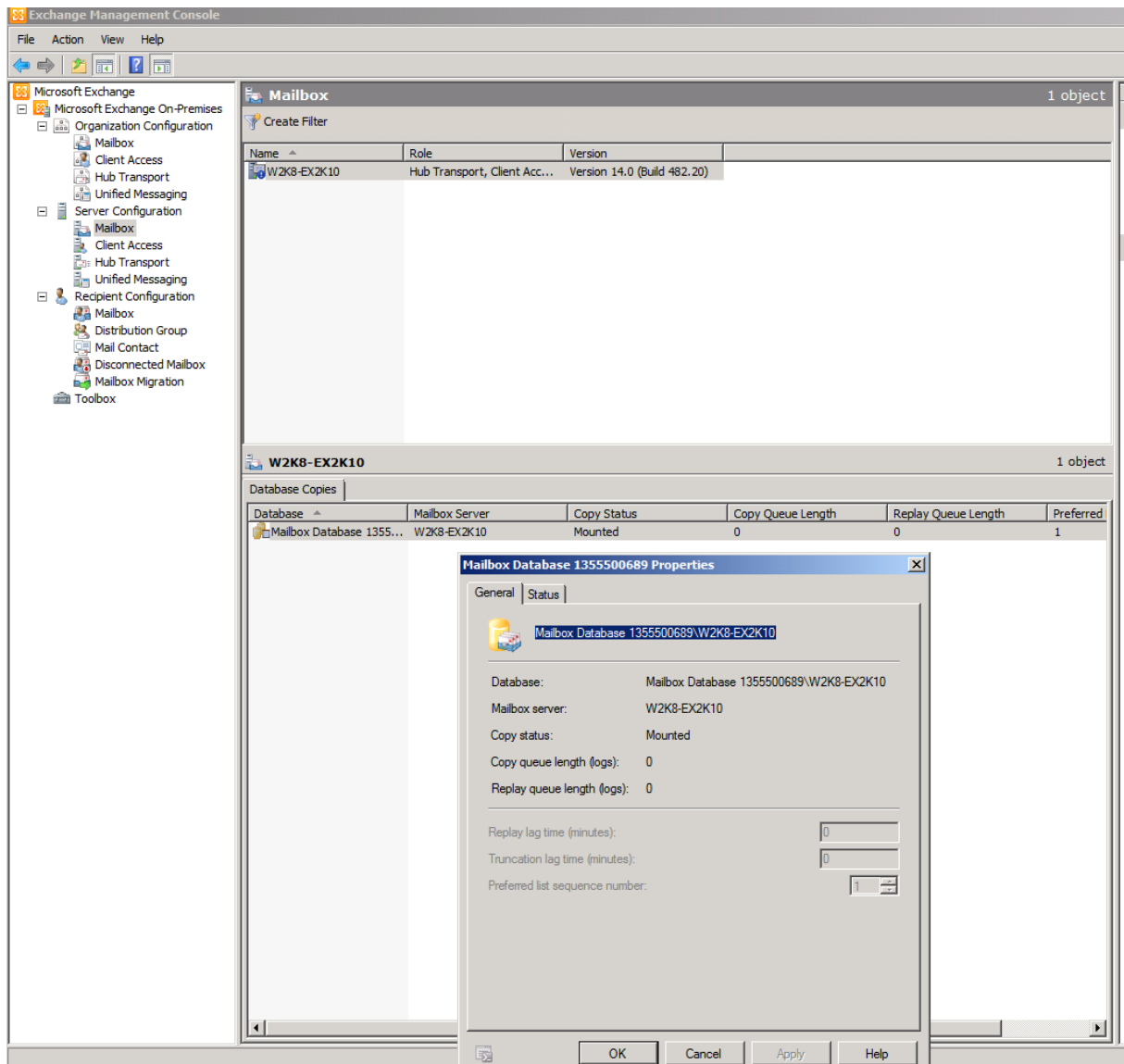
Configure

Cancel

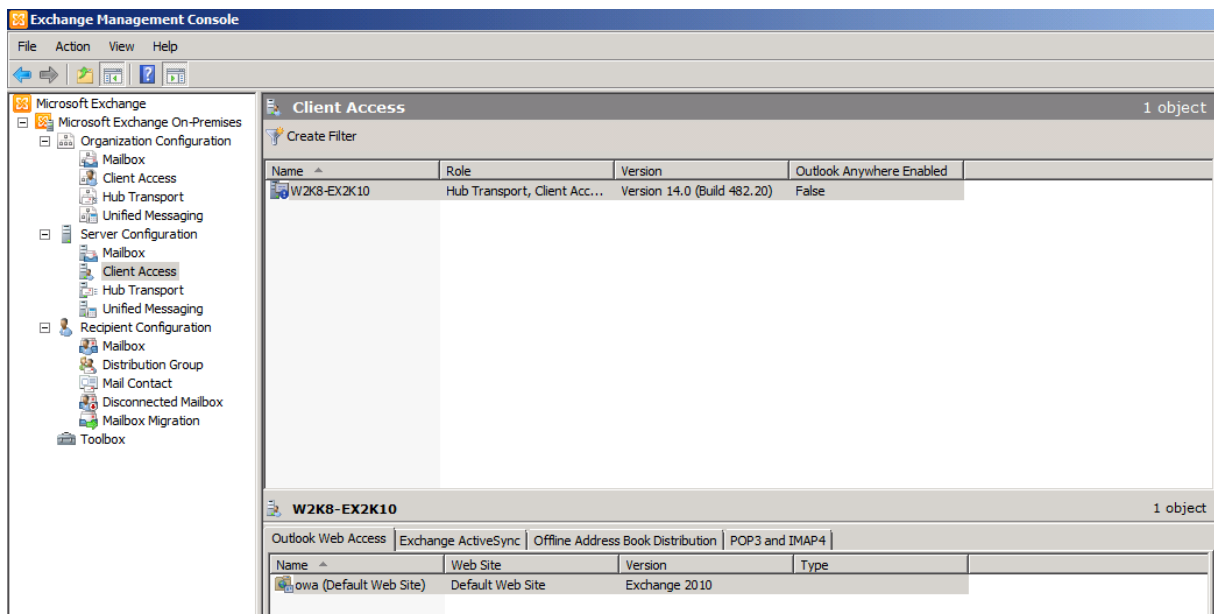
Feedback please



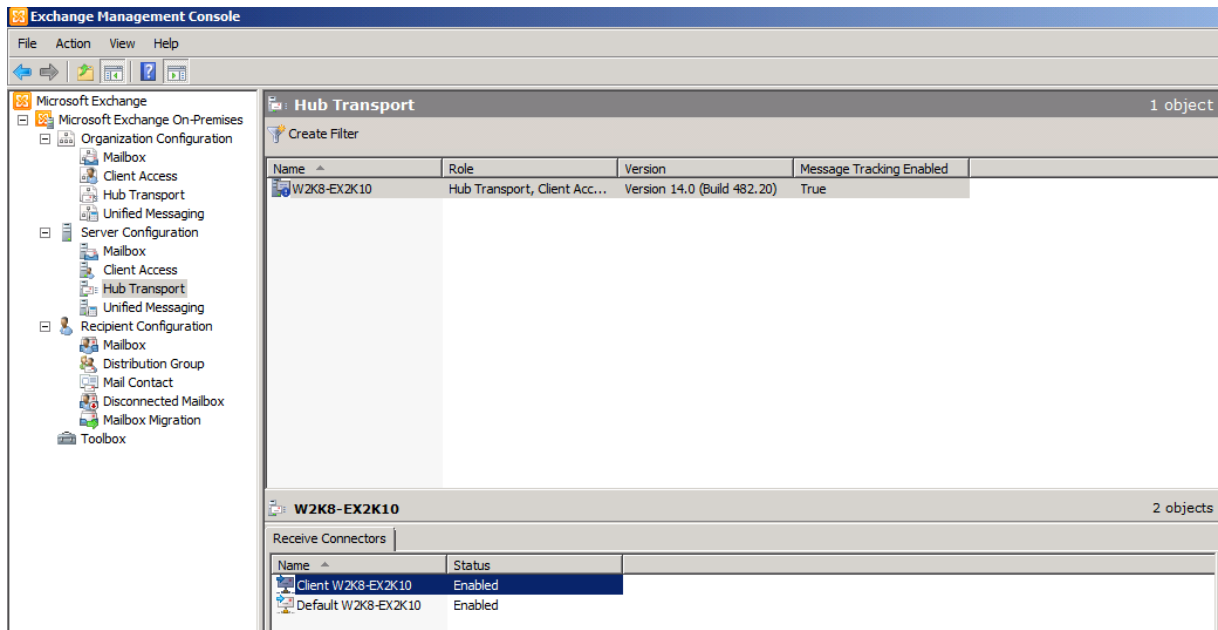
Nix neues in der Box



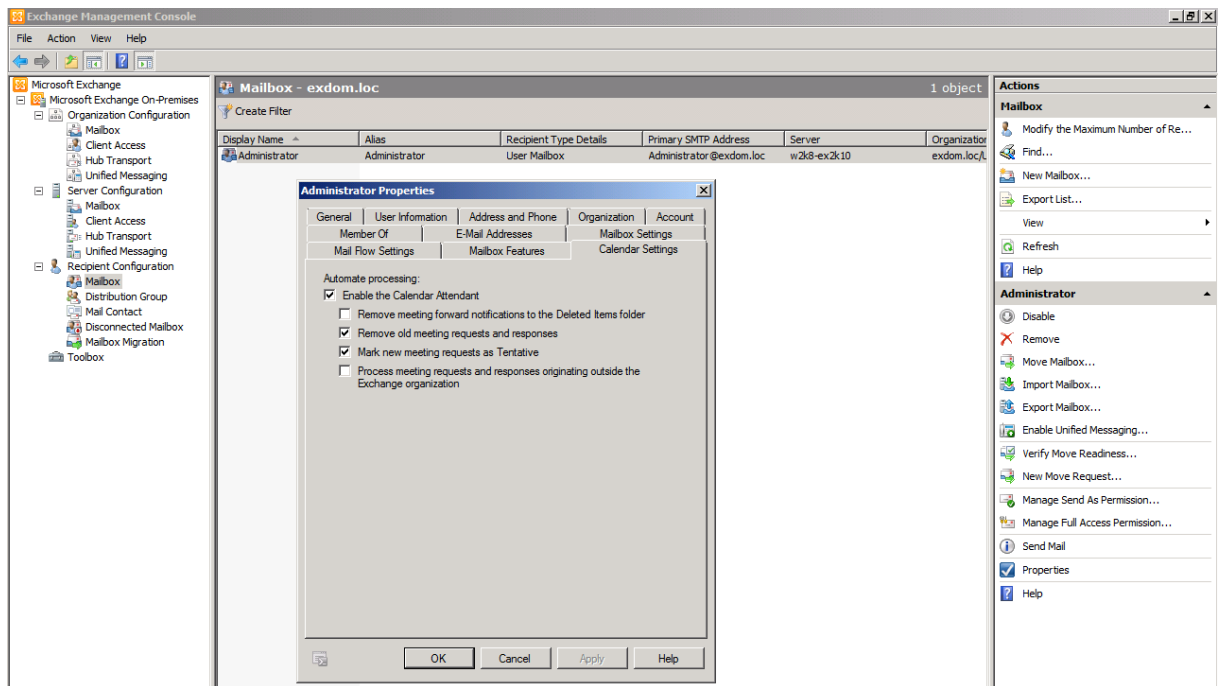
Soweit ich sehen kann, alles beim alten hier:



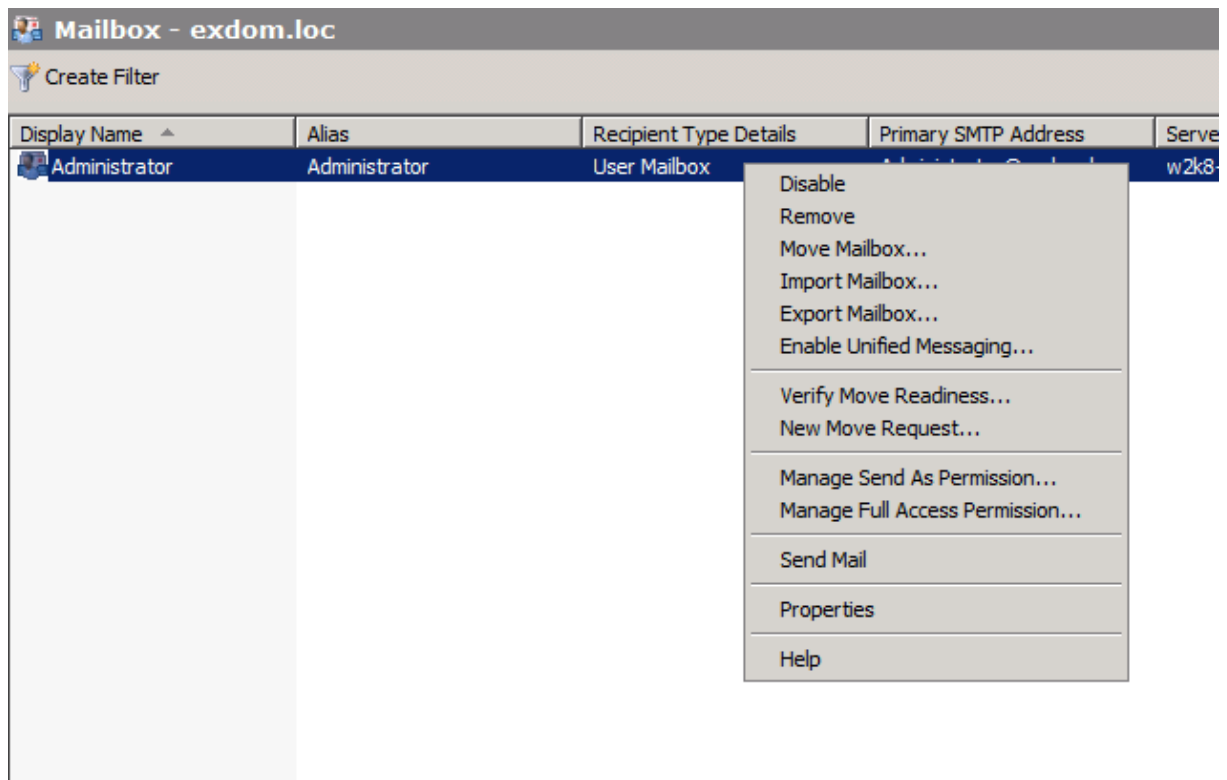
Soweit ich sehen kann, alles beim alten hier:



Bei den Mailboxen fast alles unverändert, bis auf



... und ...



Kann die Mailbox verschoben werden?




Verify Move Readiness

- Verify Move Readiness
- Completion

Verify Move Readiness

This wizard verifies that the selected mailboxes are ready to be moved.

The following mailboxes will be verified:

Display Name	Organizational Unit
 Administrator	exdom.loc/Users

Source forest: Microsoft Exchange On-Premise
Target forest:

FQDN of the Mailbox Replication Service proxy server in the source forest:

Use the following source forest's credential:

User name:

Password:

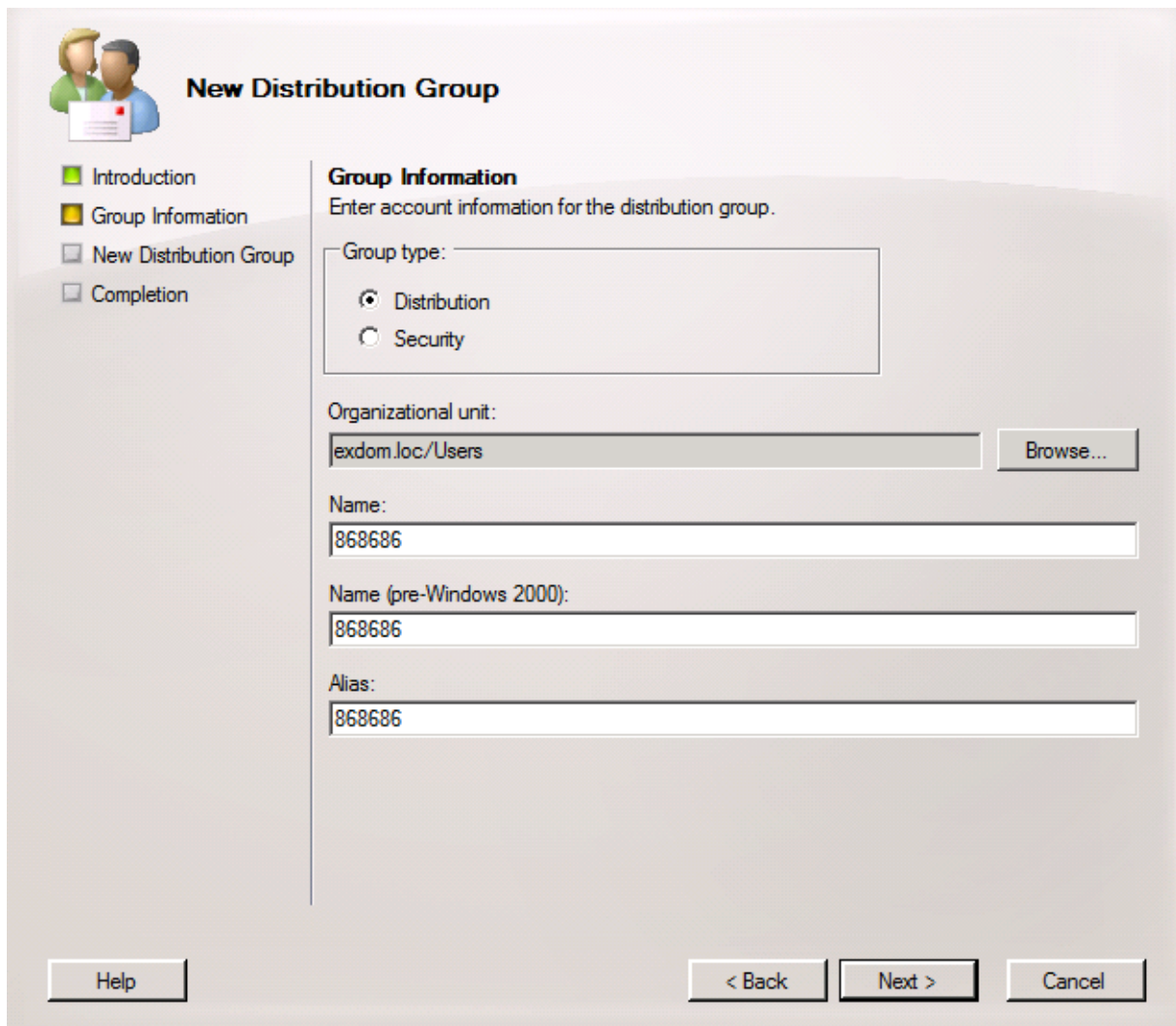
Help

< Back

Verify

Cancel

Neue Verteilergruppe



New Distribution Group

Introduction
Group Information
New Distribution Group
Completion

Group Information
Enter account information for the distribution group.

Group type:
 Distribution
 Security

Organizational unit:
exdom.loc/Users Browse...

Name:
868686

Name (pre-Windows 2000):
868686

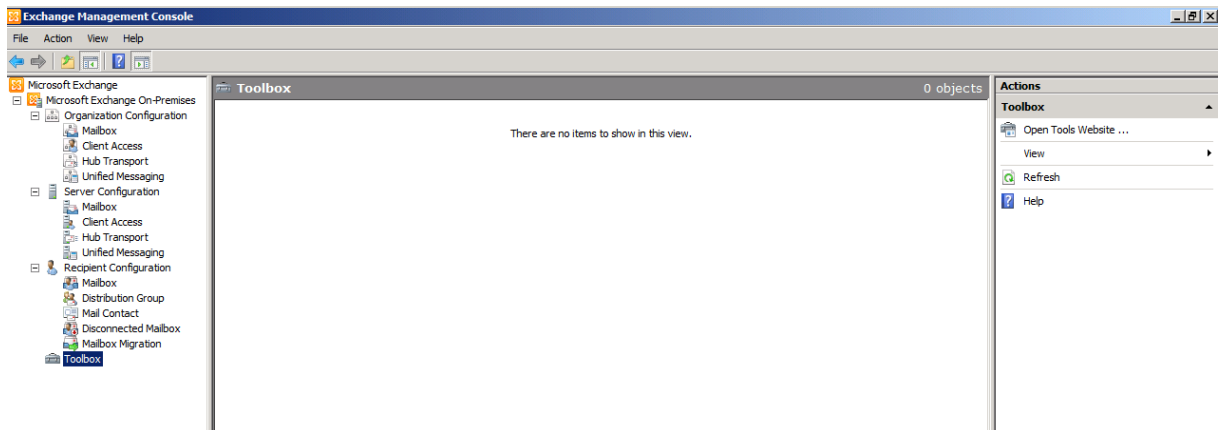
Alias:
868686

Help < Back Next > Cancel

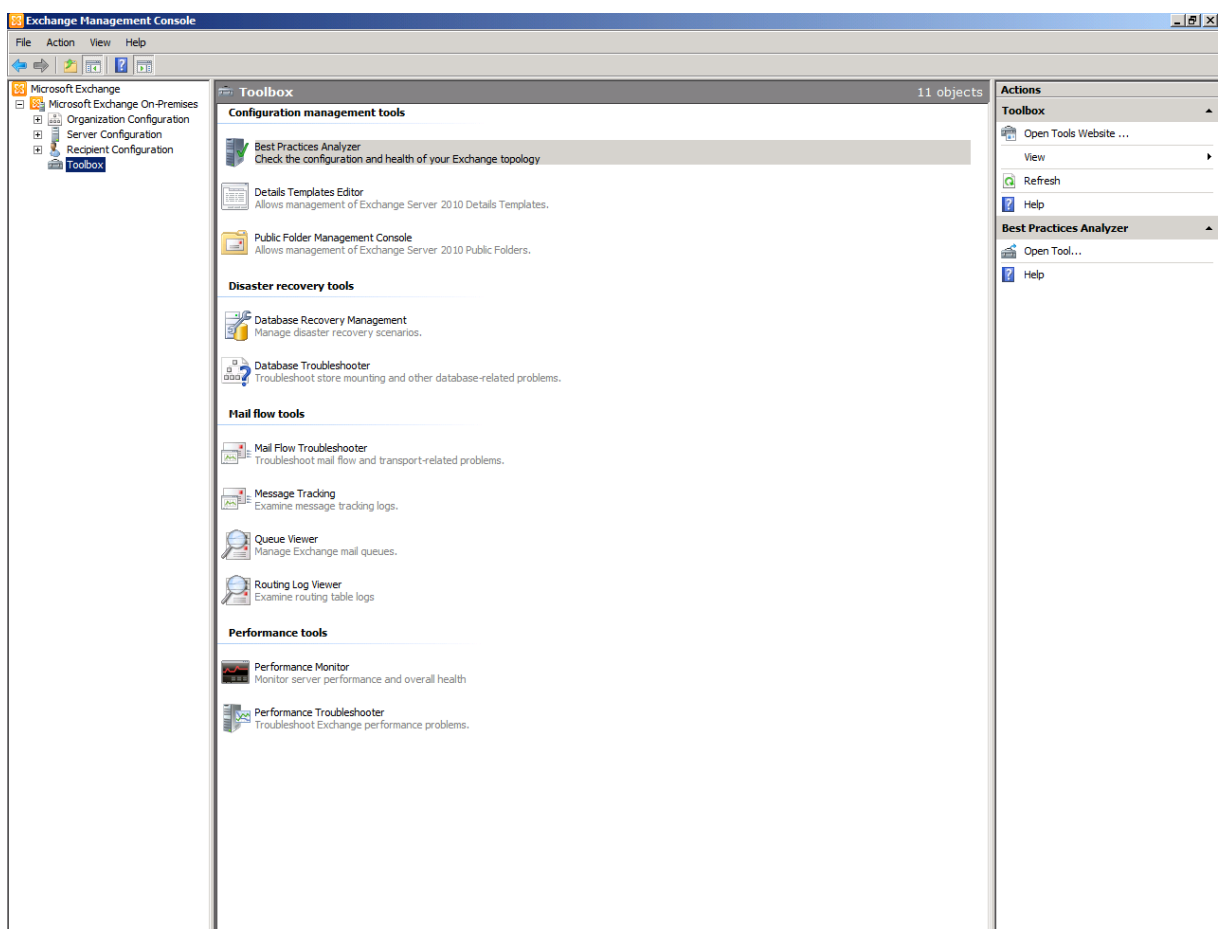
Mailbox Migration

- Unified Messaging
- Recipient Configuration
 - Mailbox
 - Distribution Group
 - Mail Contact
 - Disconnected Mailbox
 - Mailbox Migration**
- Toolbox

Da ist noch Ebbe ...



OK, nochmal aufrufen und dann ist was da!



Einige Tools liegen aber im BIN Verzeichnis der Exchange 2010 Installation

Powershell

```
Machine: W2K8-EX2K10
Welcome to the Exchange Management Shell!

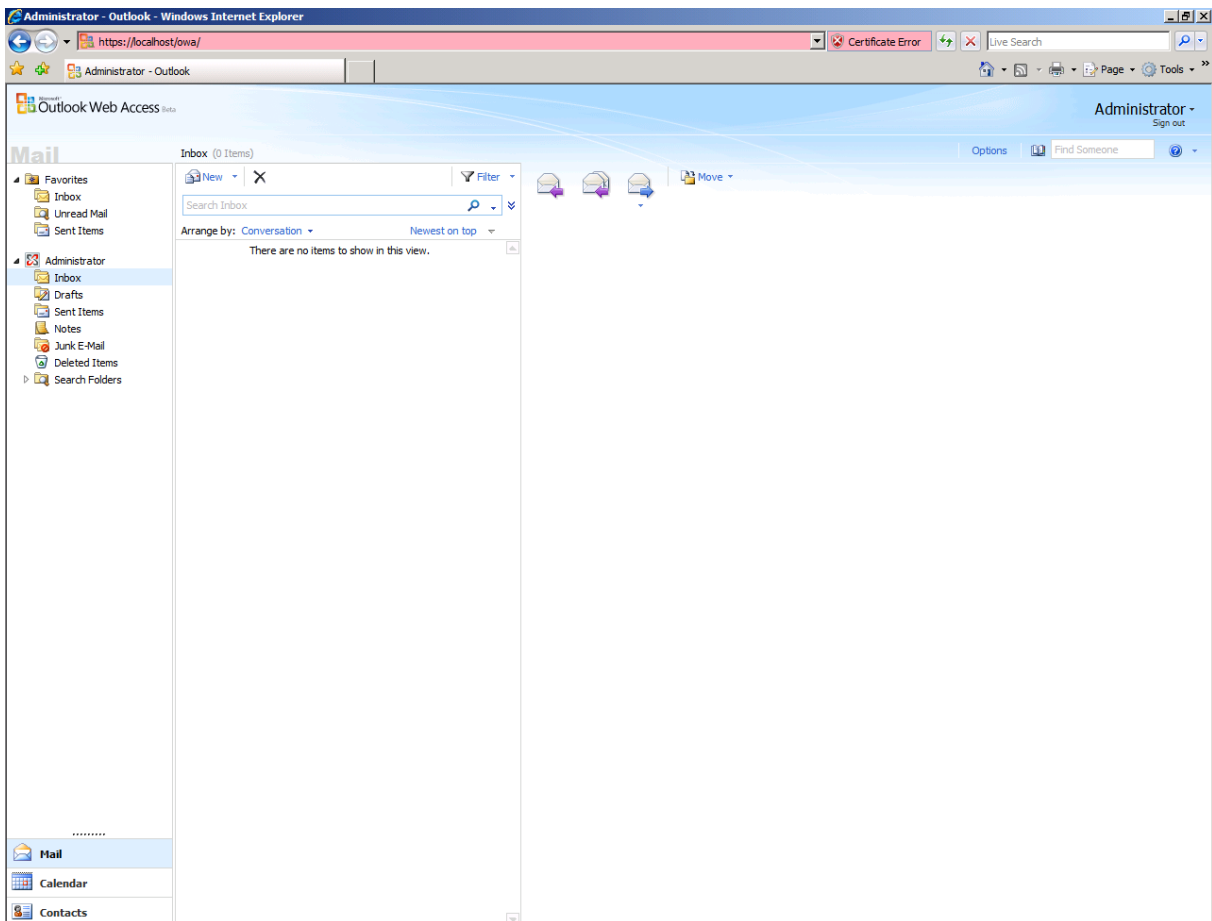
Full list of cmdlets:          get-command
Only Exchange cmdlets:       get-excommand
Cmdlets for a specific role:  get-help -role *UM* or *Mailbox*
Get general help:             help
Get help for a cmdlet:        help <cmdlet-name> or <cmdlet-name> -?
Show quick reference guide:   quickref
Exchange team blog:          get-exblog
Show full output for a cmd:    <cmd> ! format-list

Tip of the day #56:

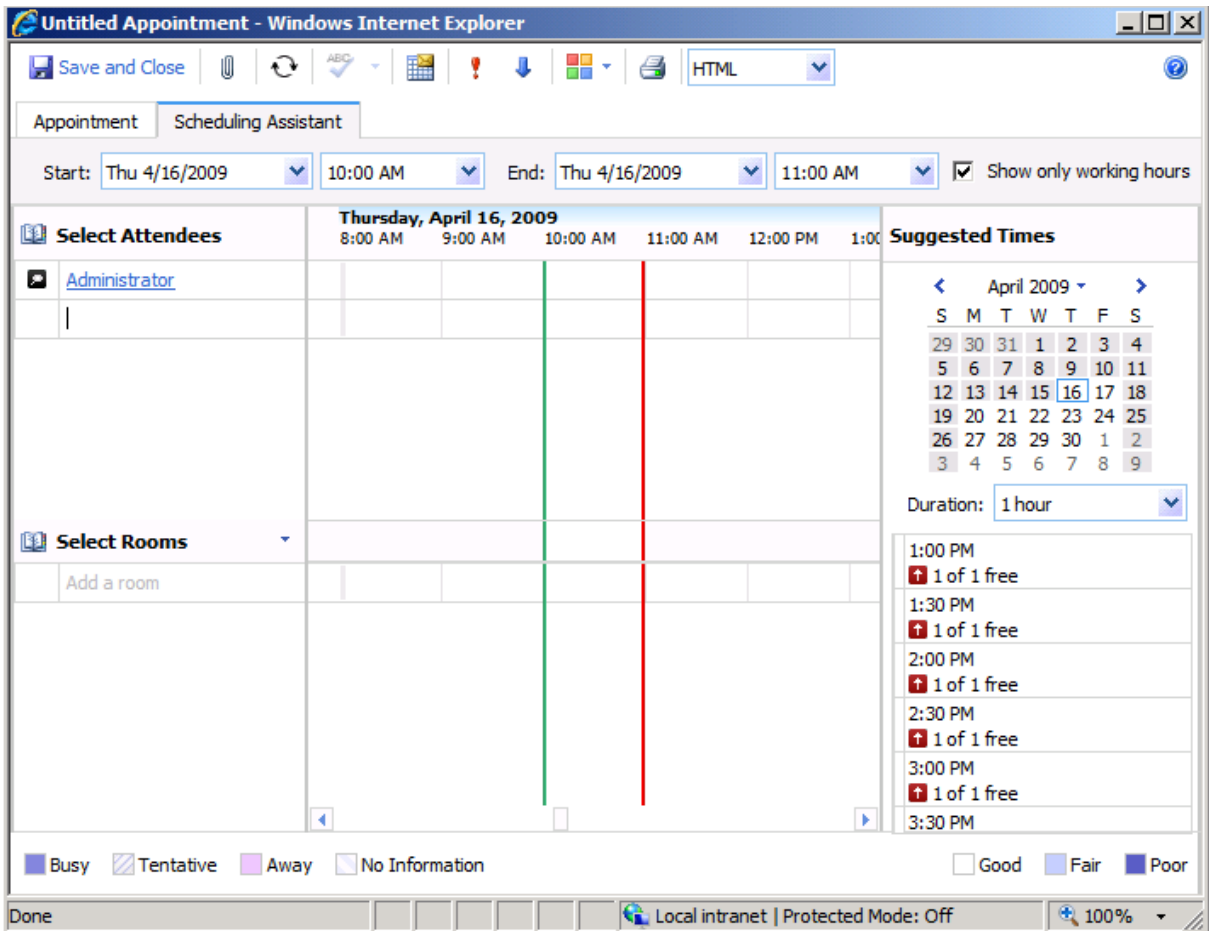
What's the difference between server-side filtering and client-side filtering? Server-side filtering is used with the recipient and queue cmdlets, which support the Filter parameter, because these cmdlets can return large result sets. The server filters the results by using the criteria you specify, and then sends you the filtered results. Client-side filtering can be used with any cmdlet. The entire result set is sent to the client computer, which then filters the data and provides a filtered result set. Client-side filtering uses the Where-Object cmdlet, which can be shortened to Where.

VERBOSE: Connecting to W2K8-EX2K10.exdom.loc
VERBOSE: Connected to W2K8-EX2K10.exdom.loc.
[PS] C:\Windows\System32>
```

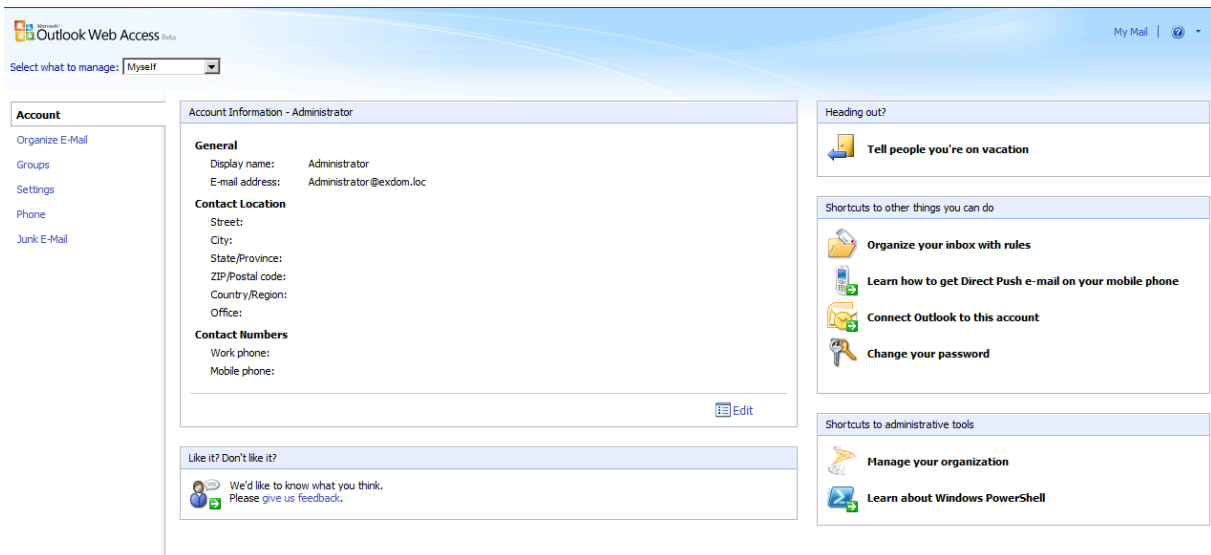
OWA ist ja soooo schoen...



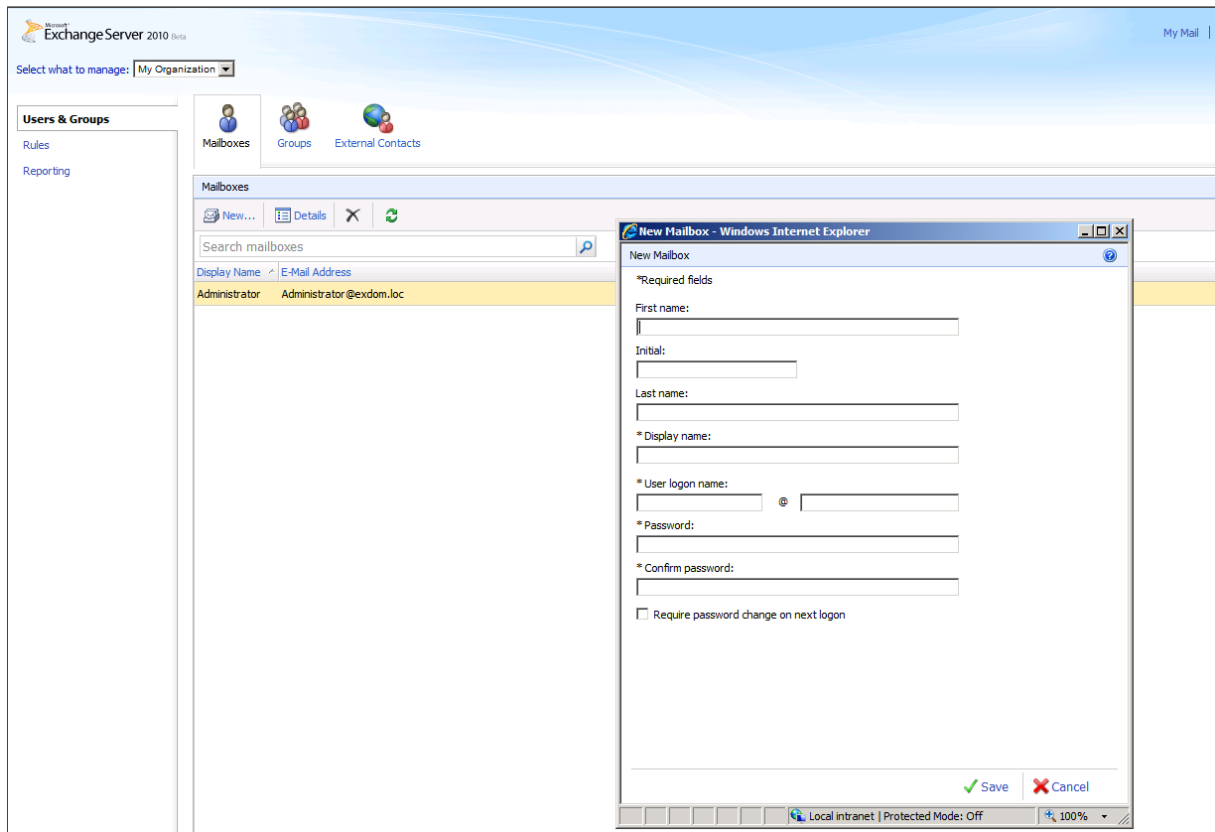
Scheduling



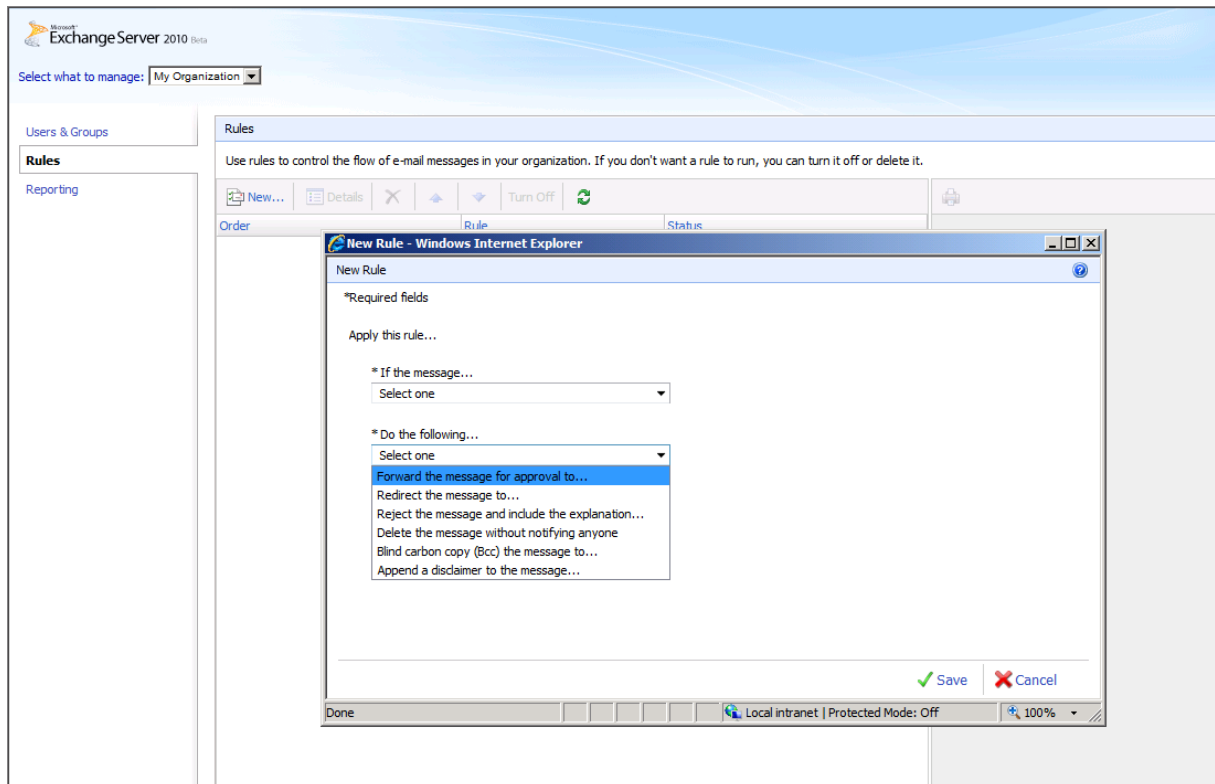
Ahh, Assistenten und alles (noch) einfacher geworden



Cool, User Provisioning per OWA fuer Admins



Transport rules a la OWA



Reporting

Microsoft Exchange Server 2010 Beta

Select what to manage: My Organization

Users & Groups
Rules
Reporting

Delivery Reports
Search for delivery information about messages sent to or from a specific person in the past two weeks. You can narrow the search to messages with certain keywords in the subject.

* Mailbox to search:
Administrator

Search for messages sent to:

Search for messages received from:

Search for these words in the subject line:

Subject
Type one or more keywords to search for in the subject line. Separate words with spaces to search for messages that contain any of the keywords. Use double quotation marks to search for multi-word phrases.
[Learn More](#)

Search Results

Delivery Report

From	To	Subject	Sent Time
There are no items to show in this view.			

Einstellungen ohne Ende

Microsoft Outlook Web Access Beta

Select what to manage: Myself

Account
Organize E-Mail
Groups
Settings
Phone
Junk E-Mail

Mail Spelling Calendar General Regional Password

E-Mail Name Resolution

When resolving names, check first in:

Global address list
 Contacts

Appearance

To see the color scheme you select, refresh your browser after you save your changes.

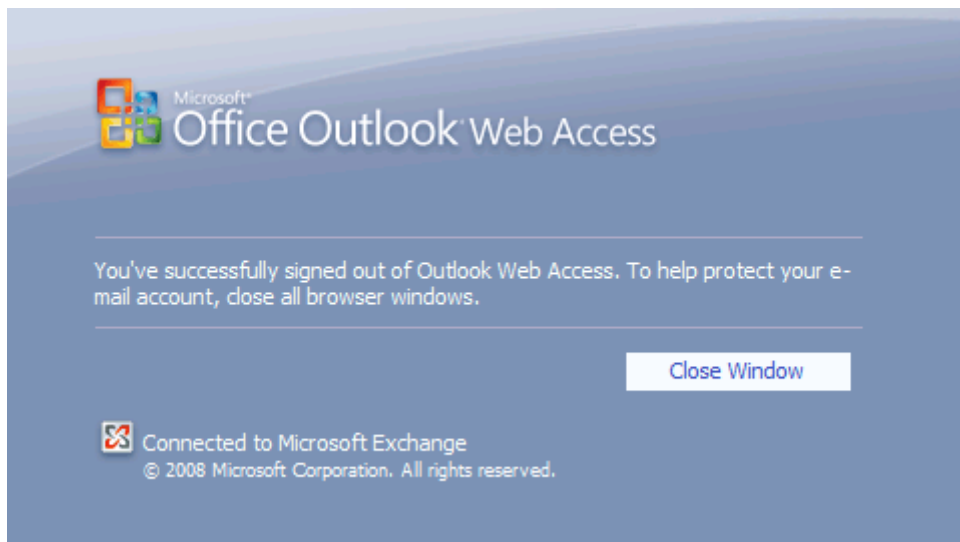
Seattle Sky

Accessibility

If you have low vision and use a screen reader or high contrast settings, you can select the check box below to optimize your viewing experience in the future. To update this setting, save your changes and sign out.

Use the blind and low vision experience

2008



So, das war es erst mal im Ueberblick. Bestimmt habe ich ne Menge vergessen und auch die etlichen Details muss man (n) sich so nach und nach erarbeiten, aber fuer den ersten Ueberblick erstmal ausreichend.