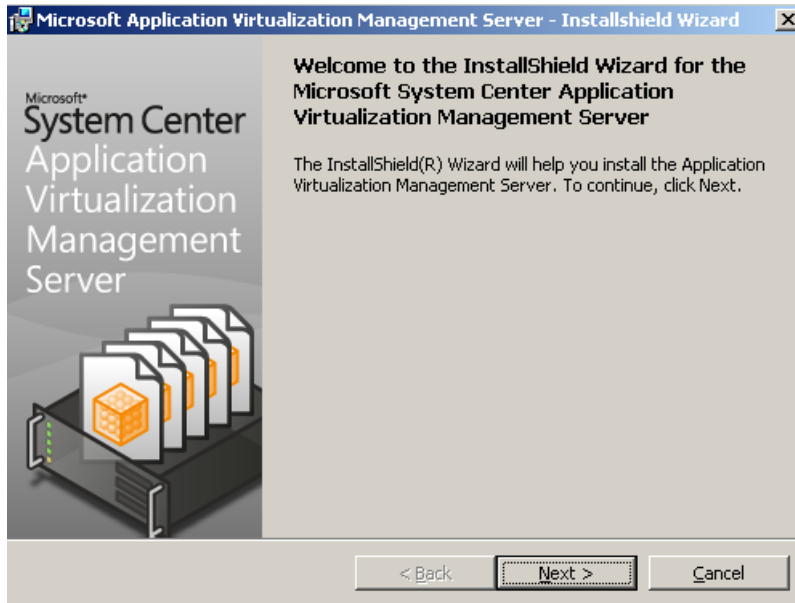
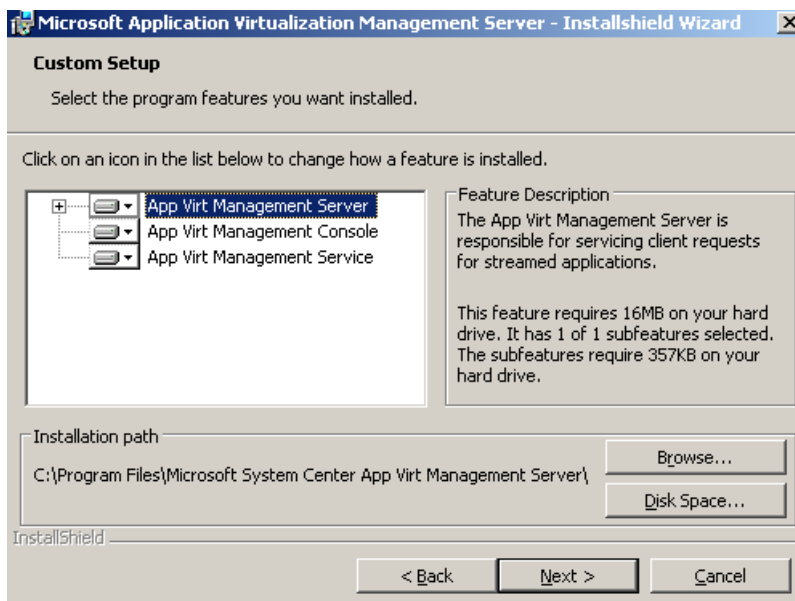


Installation und Konfiguration von Microsoft Application Virtualization Server 4.5 (ehemals Softgrid)

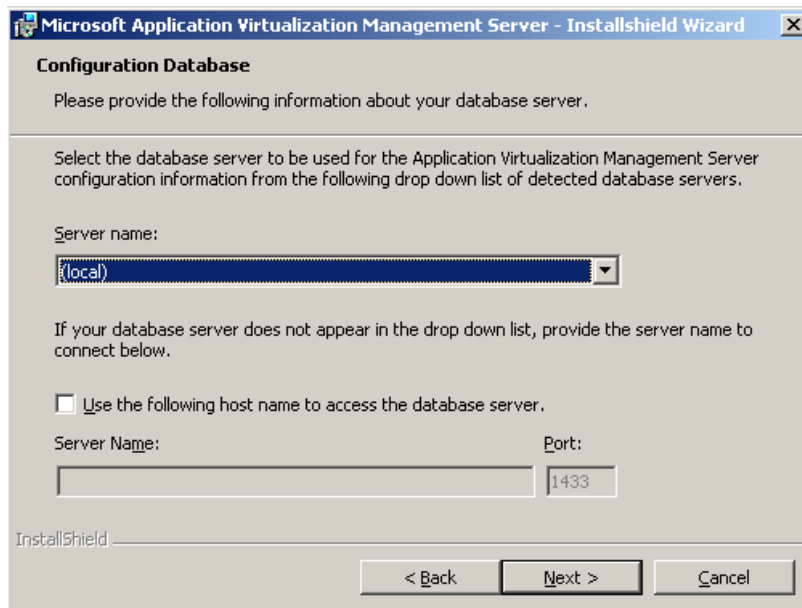
Installation des App-V Management Servers



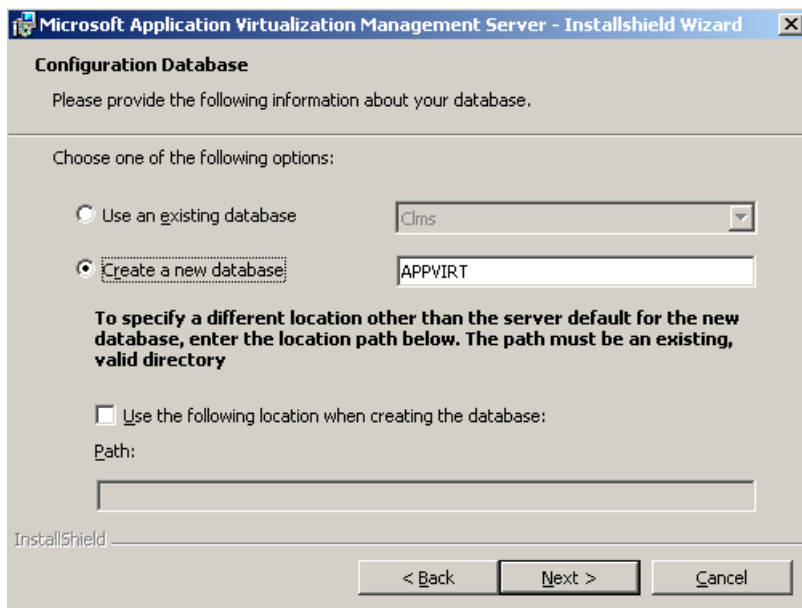
Auswahl der Komponenten



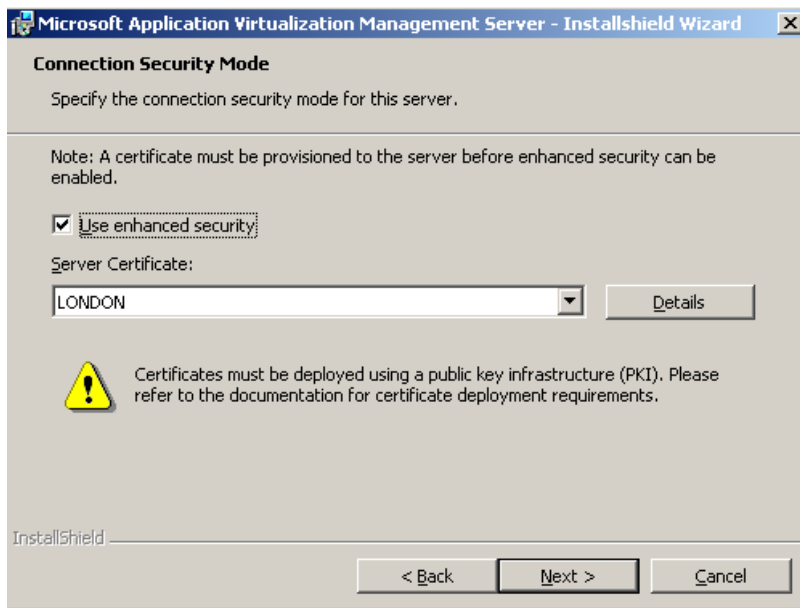
Auswahl des SQL Datenbank-Server. In diesem Fall ist die Datenbank lokal auf dem Management Server installiert.



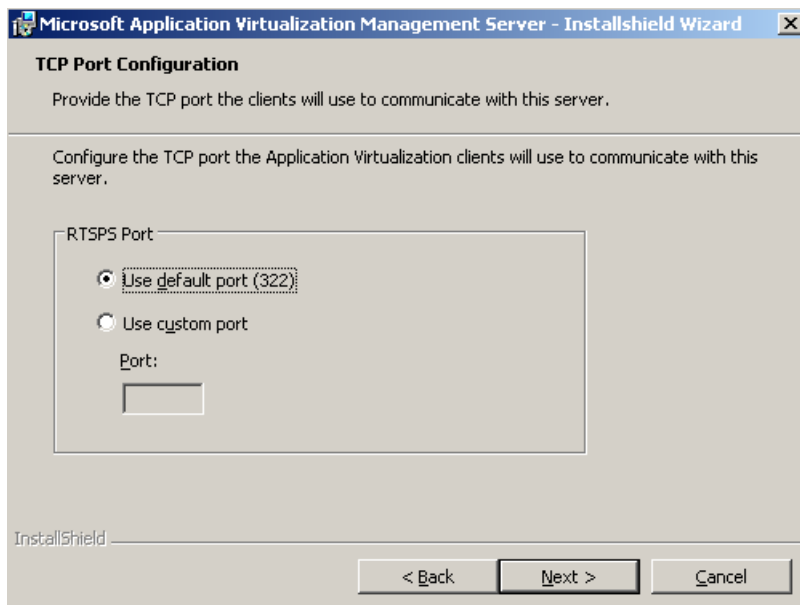
Erstellen einer neuen Datenbank fuer App-V



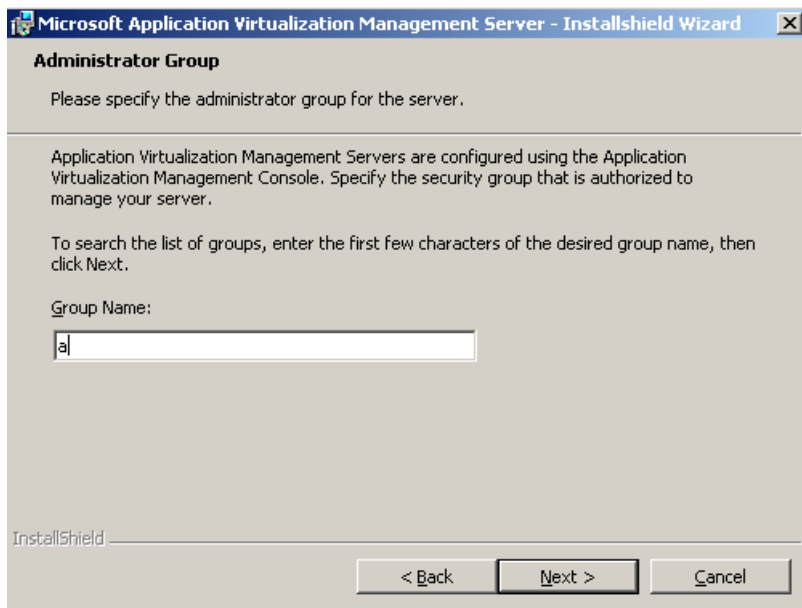
Verwenden der erweiterten Sicherheit. Schuetzt die Datenkommunikation mit Mutual Authentication mit Hilfe von Serverzertifikaten.



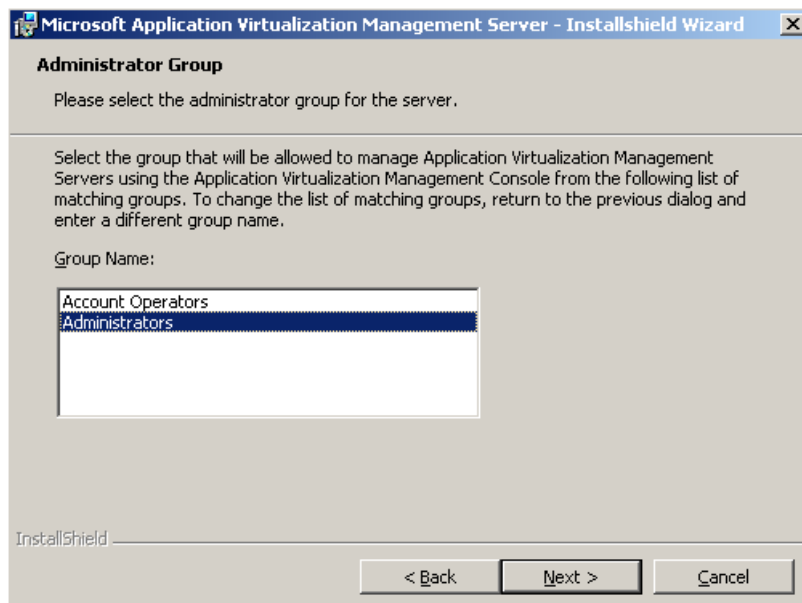
Auswahl des RTSPS Ports zur Kommunikation der Clients mit dem Server



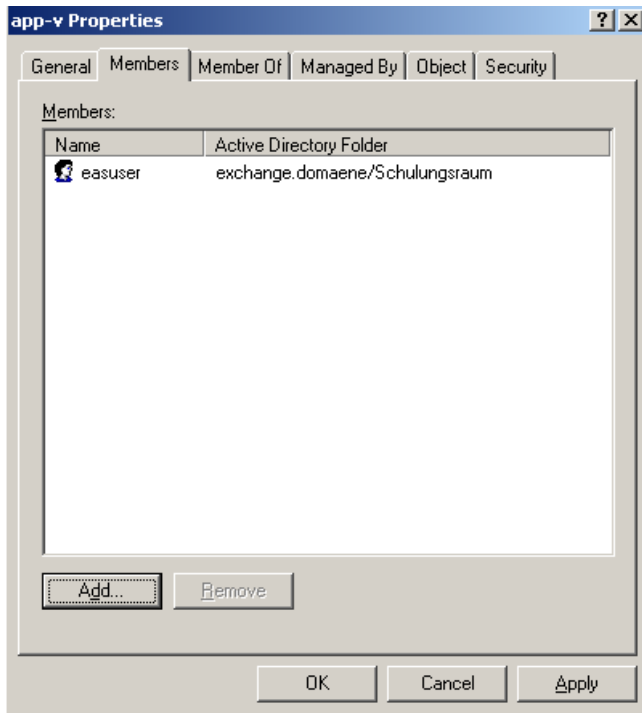
Auswahl der Administrator Gruppe. Etwas umstaendlich: Den ersten Buchstaben der Gruppe angeben und dann auf next drucken. Ein Button zur Gruppenauswahl waere einfacher gewesen ☹.



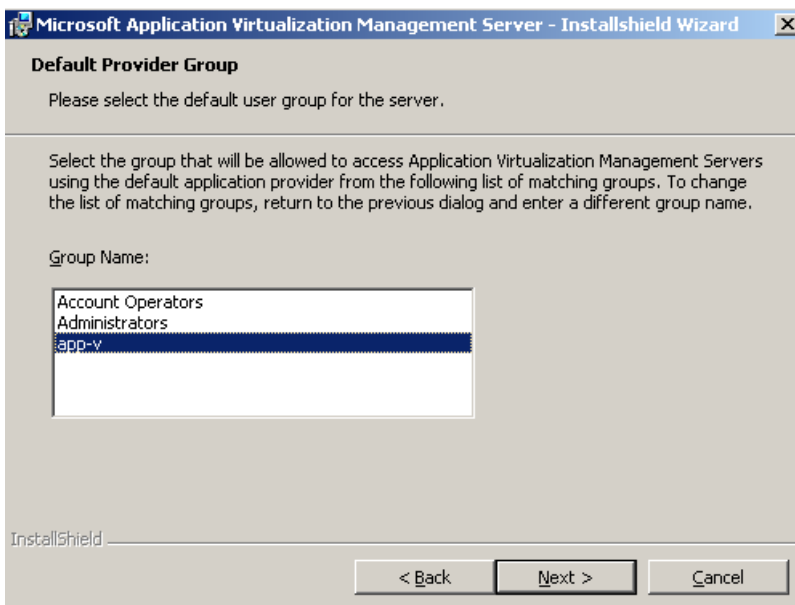
Auswahl der Admin Gruppe



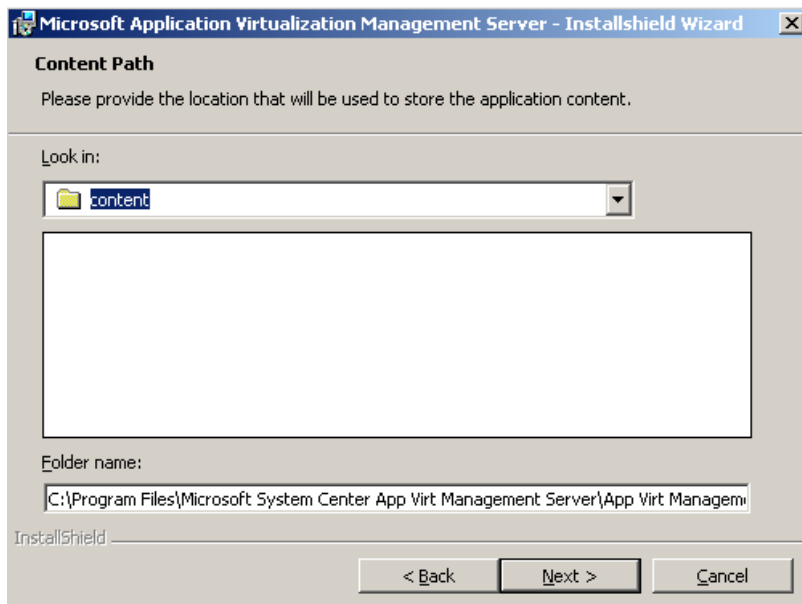
Erstellen einer Gruppe, welche App-V gestreamte Applikationen verwenden darf.



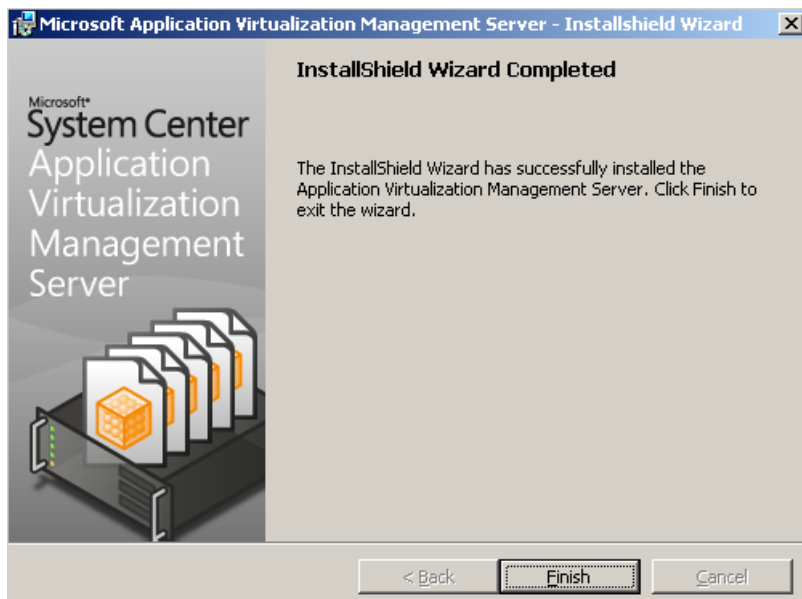
Auswahl der Gruppe, welche den Application Management Server nutzen darf.



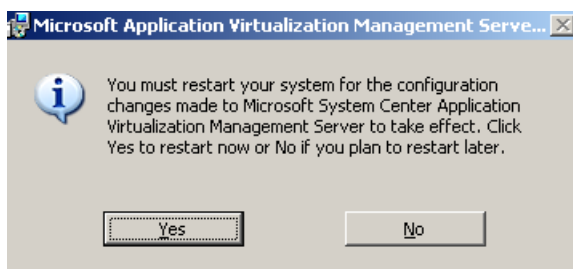
Angabe des Speicherorts fuer die Applikationen



Fertigstellen des Assistenten

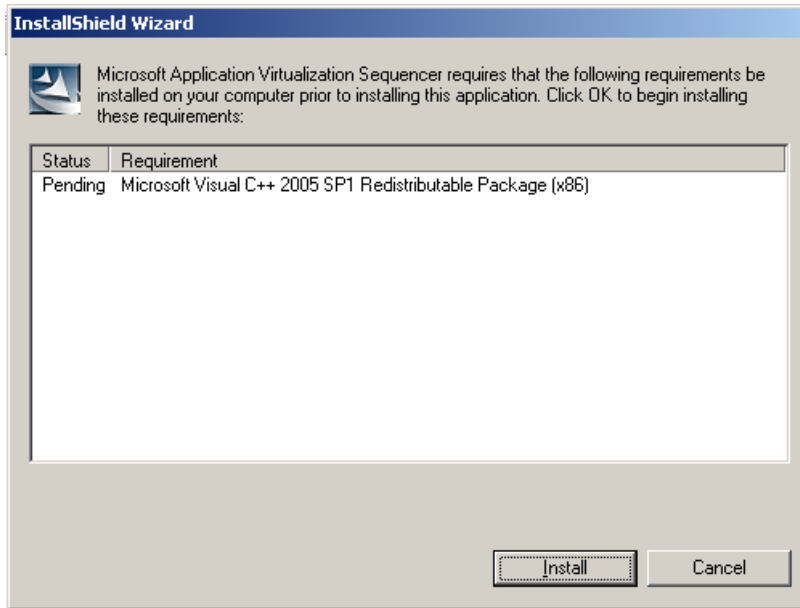


Systemneustart

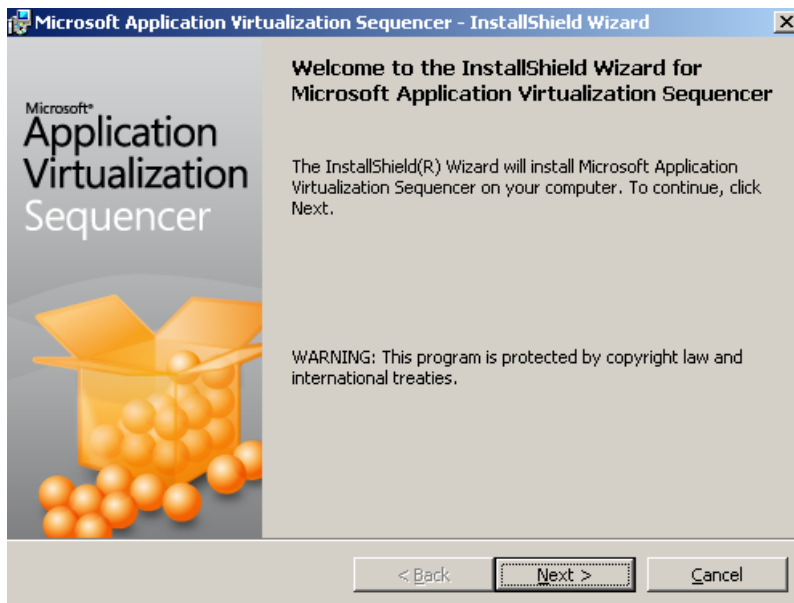


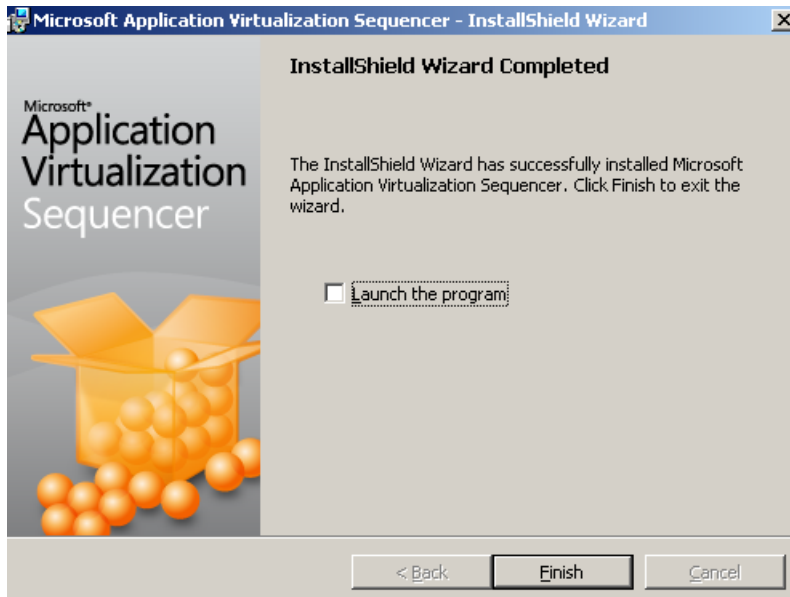
Installation des Application Sequenzer

Erfordert VC++ 2005 Sp1 Redist.



Click Next ☺

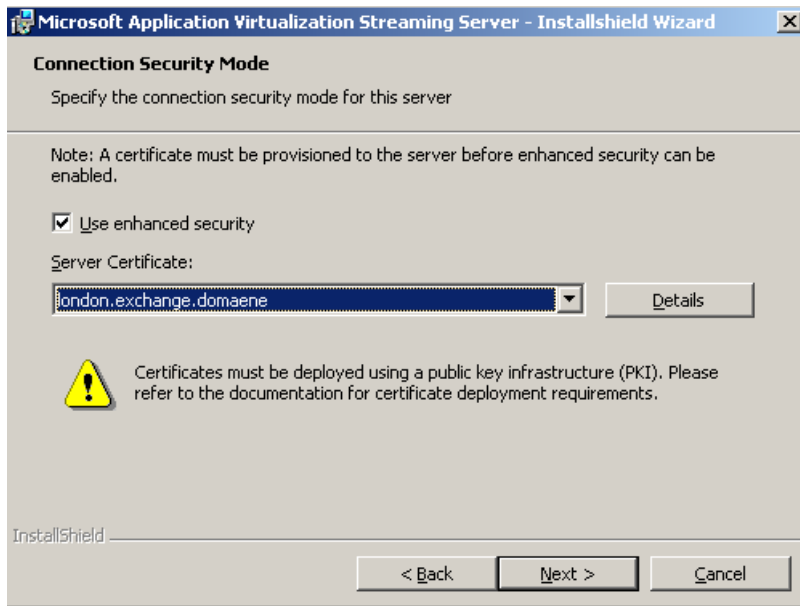




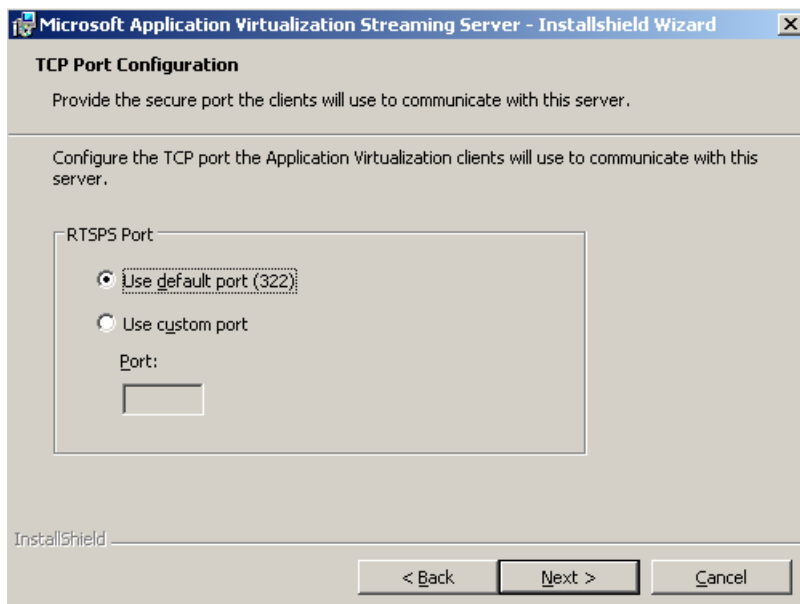
Installation des App-V Streaming Server



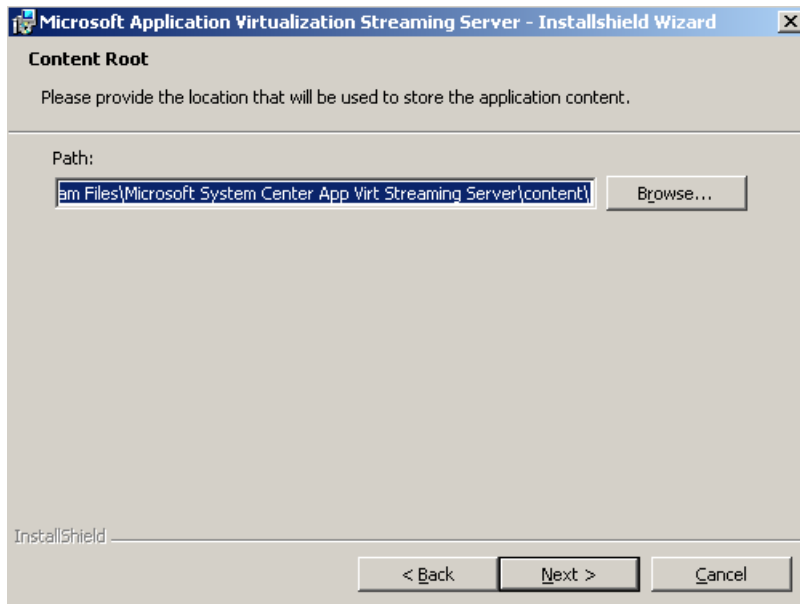
Verwenden der erweiterten Sicherheit



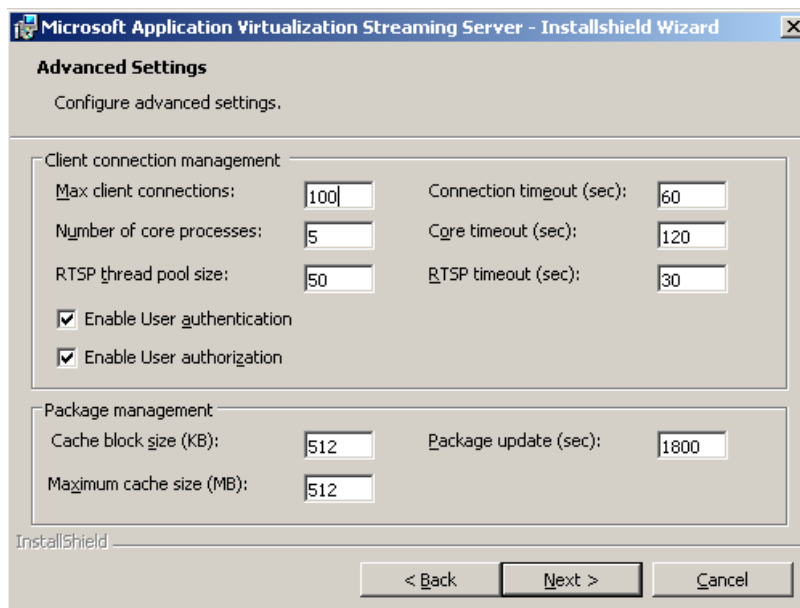
RTSPS Port



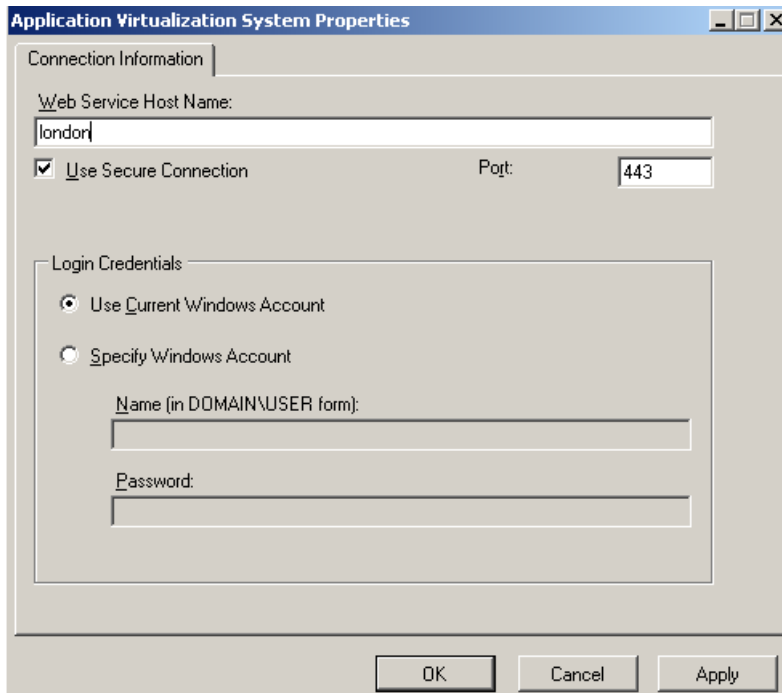
Speicherort fuer die Applikationen



Erweiterte Eigenschaften



Angabe des App-V Servers



Erstellen eines Packages


Ausführen des Sequenzers auf einer Referenz Maschine.

Starten des Sequenzers



Vergabe eines Namen fuer das Package

Sequencing Wizard: Step 1 of 7



Package Information

Package Information

- Advanced Options
- Monitor Installation
- Add Additional Files
- Configure Applications
- Launch Applications
- Sequence Package

Enter the package information. Package Name is required for generating an MSI.

Package Name
PowerPoint2007Viewer


Comments

Show Advanced Monitoring Options

< Back Next > Cancel

Blockgrosse fuer die Streaming-Option

Sequencing Wizard: Step 2 of 7



Advanced Options

Package Information

- Advanced Options
- Monitor Installation
- Add Additional Files
- Configure Applications
- Launch Applications
- Sequence Package

Select options for sequencing the package. For the majority of applications, the default values are recommended.

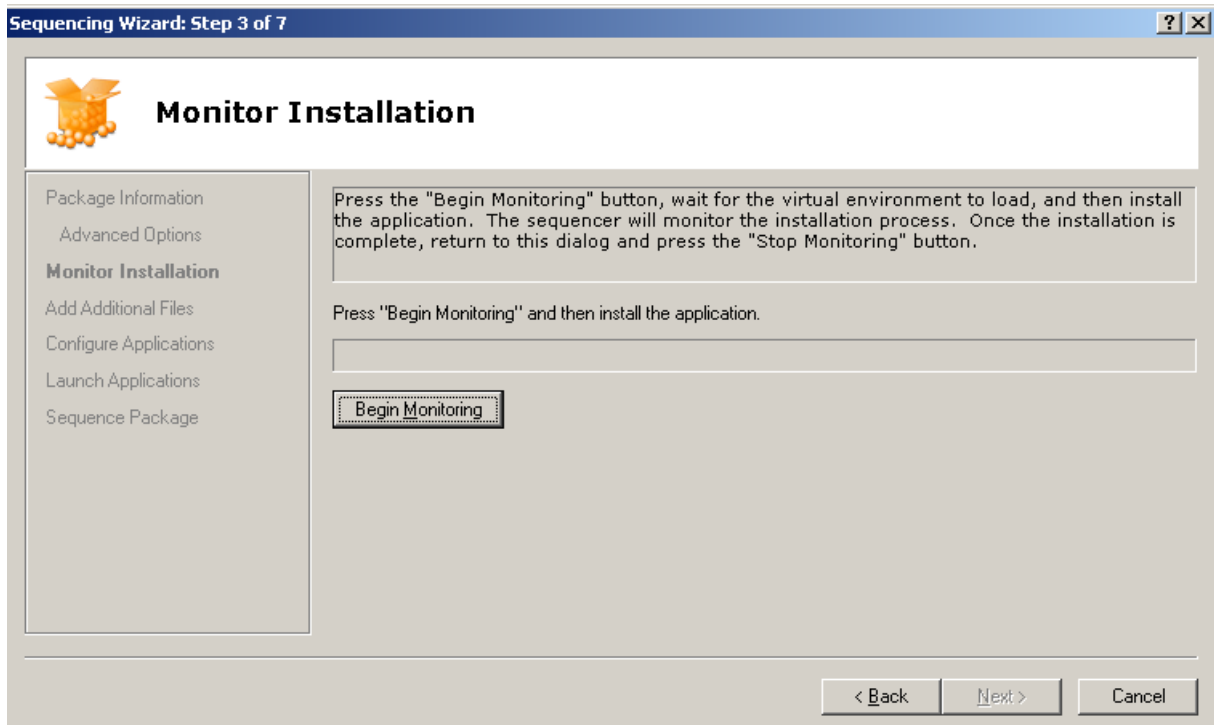
Block Size
32 KB

Allow Microsoft Update to run during monitoring

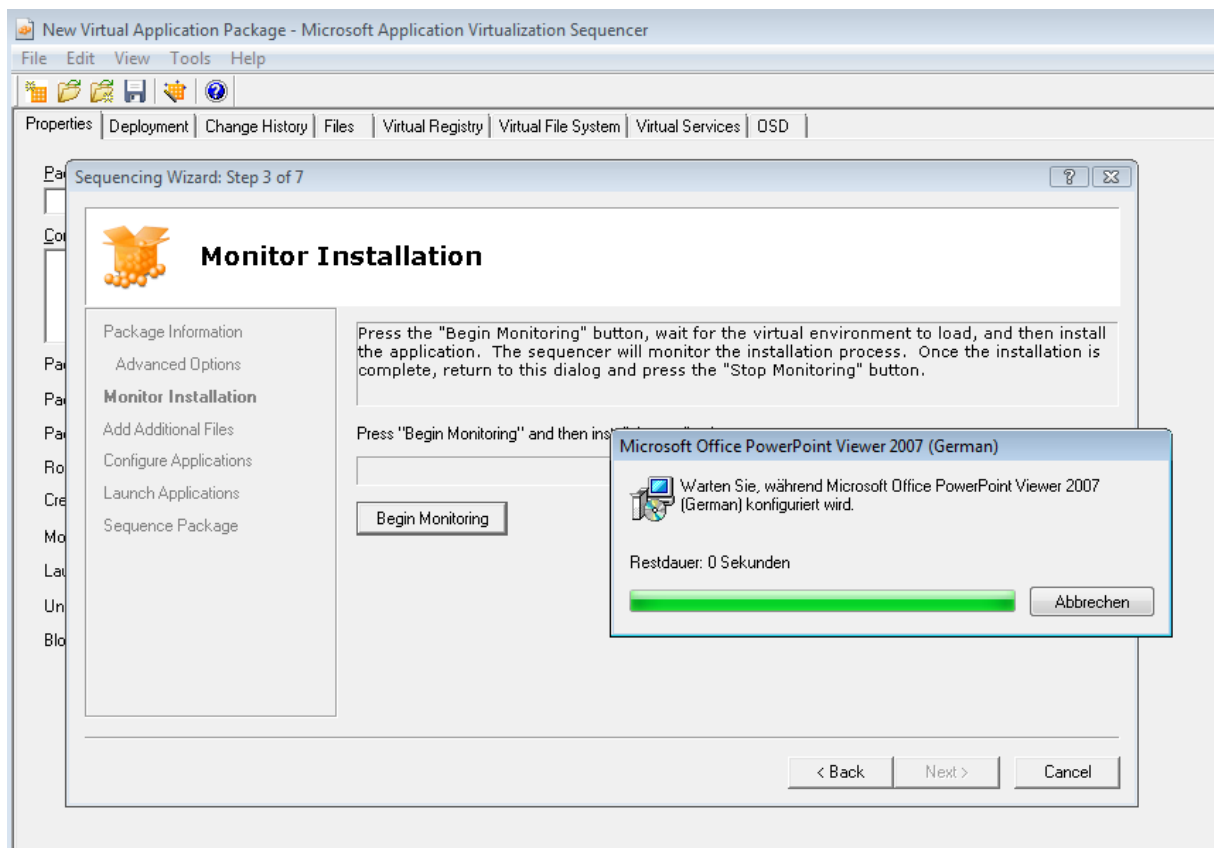
Rebase DLLs

< Back Next > Cancel

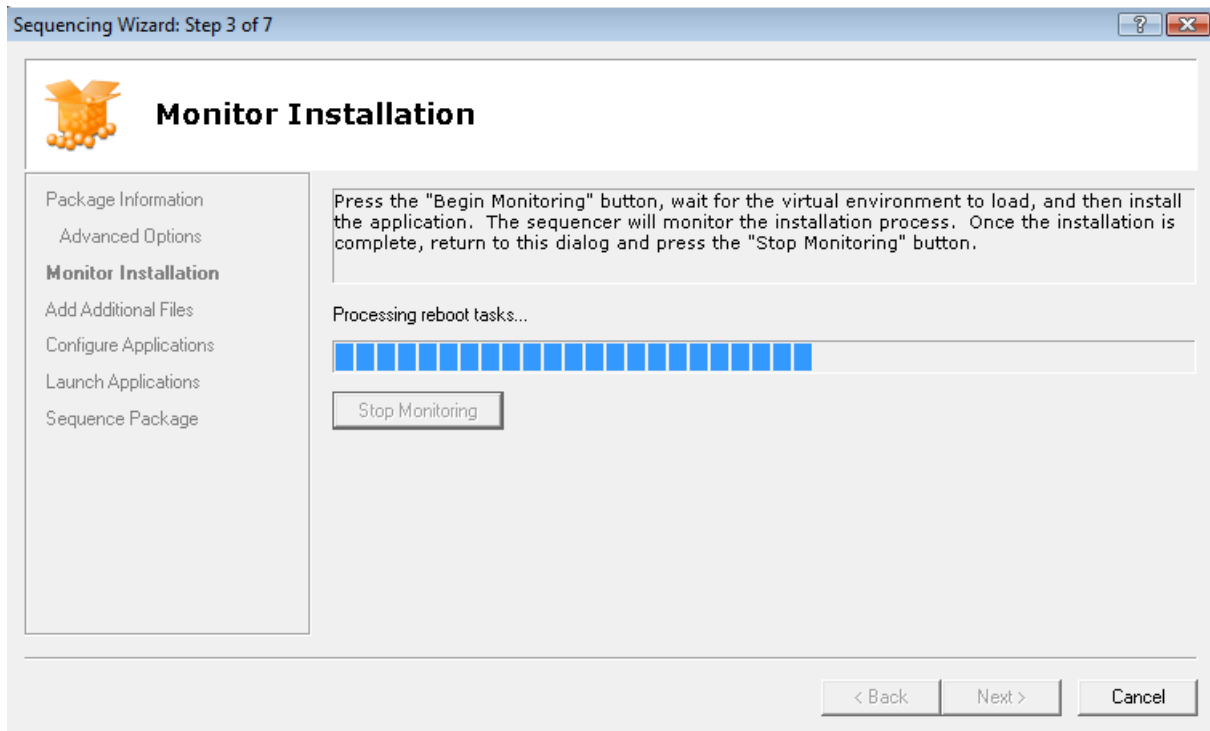
Monitoring starten und Applikation installieren



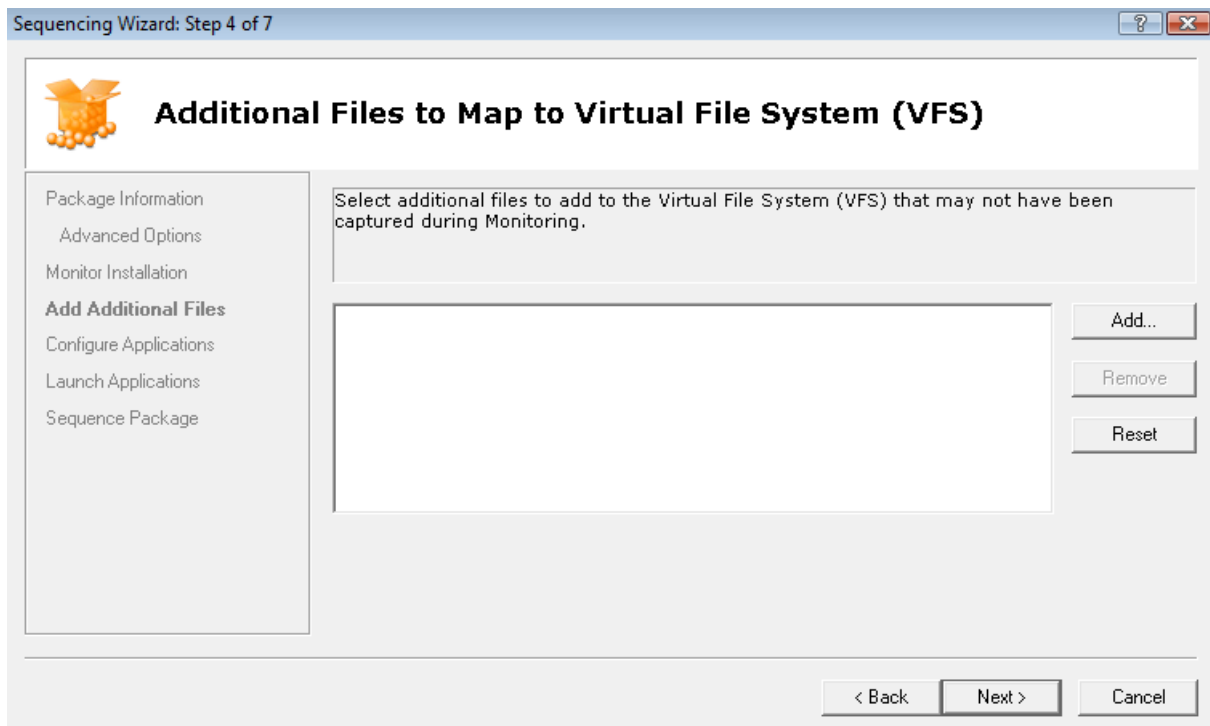
In diesem Fall PPT Viewer 2007



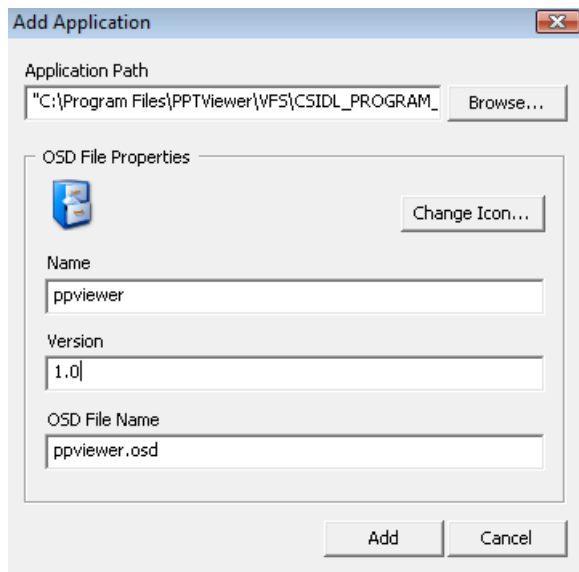
Monitoring nach Ende der Installation stoppen



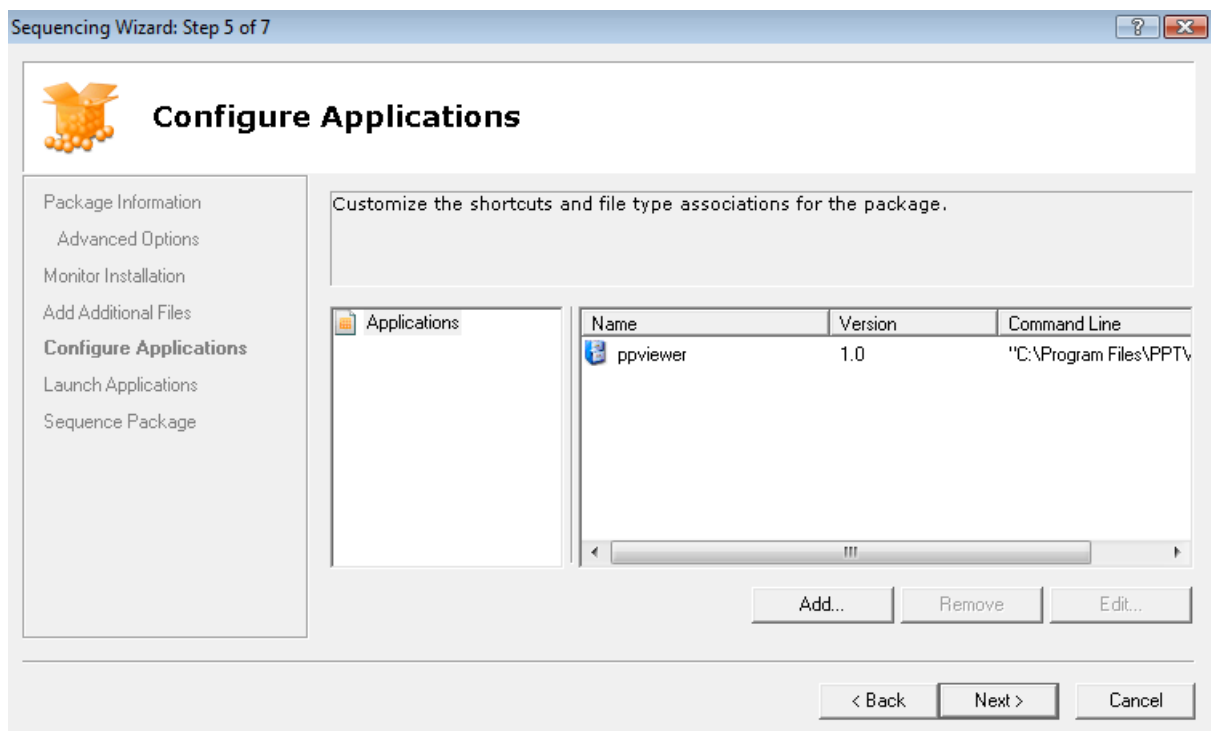
Auswahl zusätzlicher Dateien fuer das Paket, falls notwendig



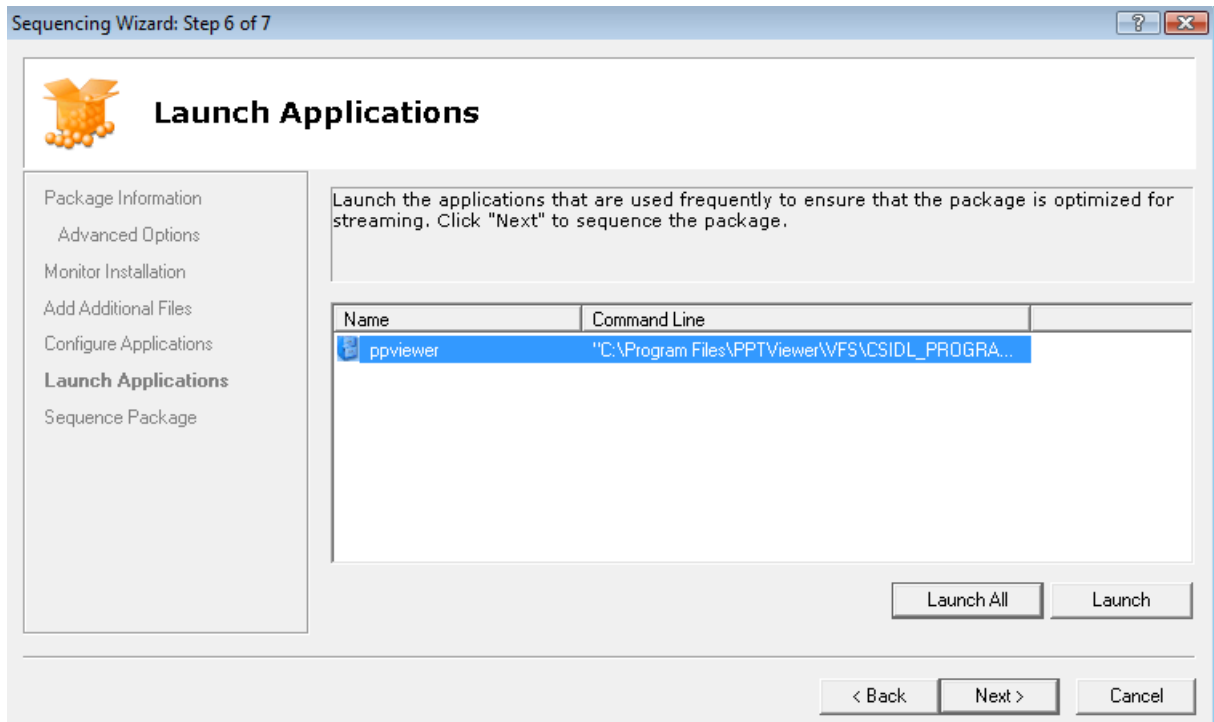
Angabe einer Versionsnummer fuer das Paket



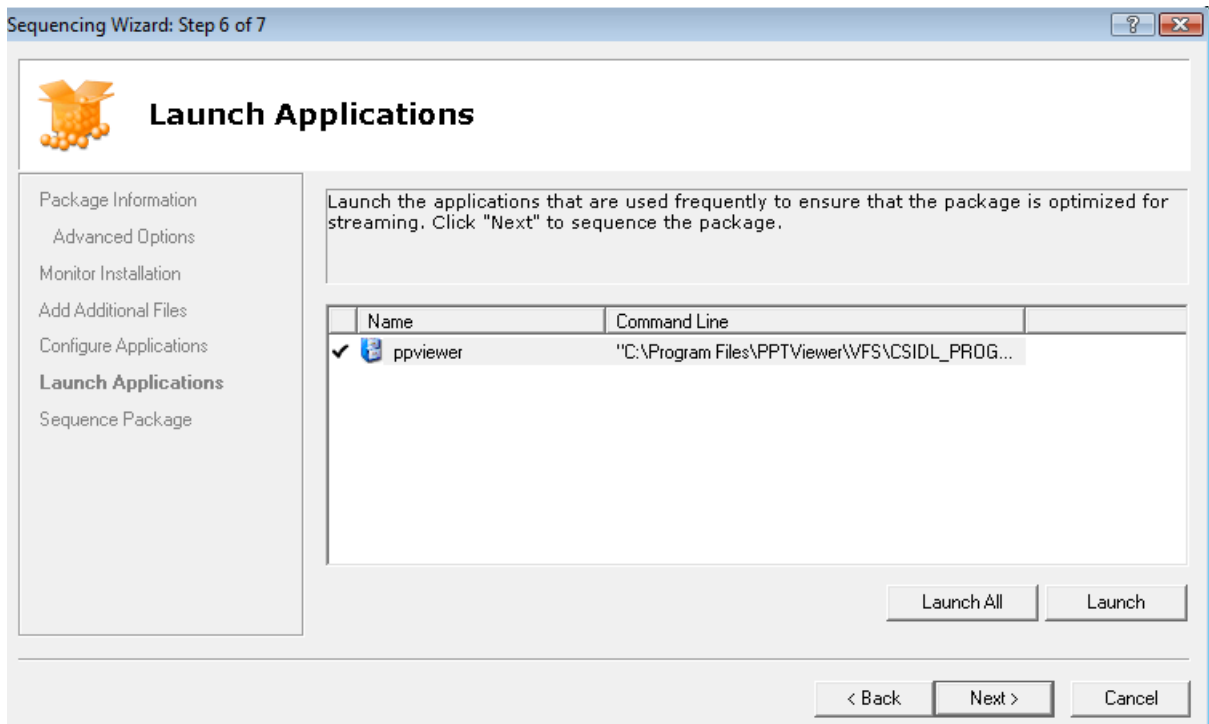
Weiter



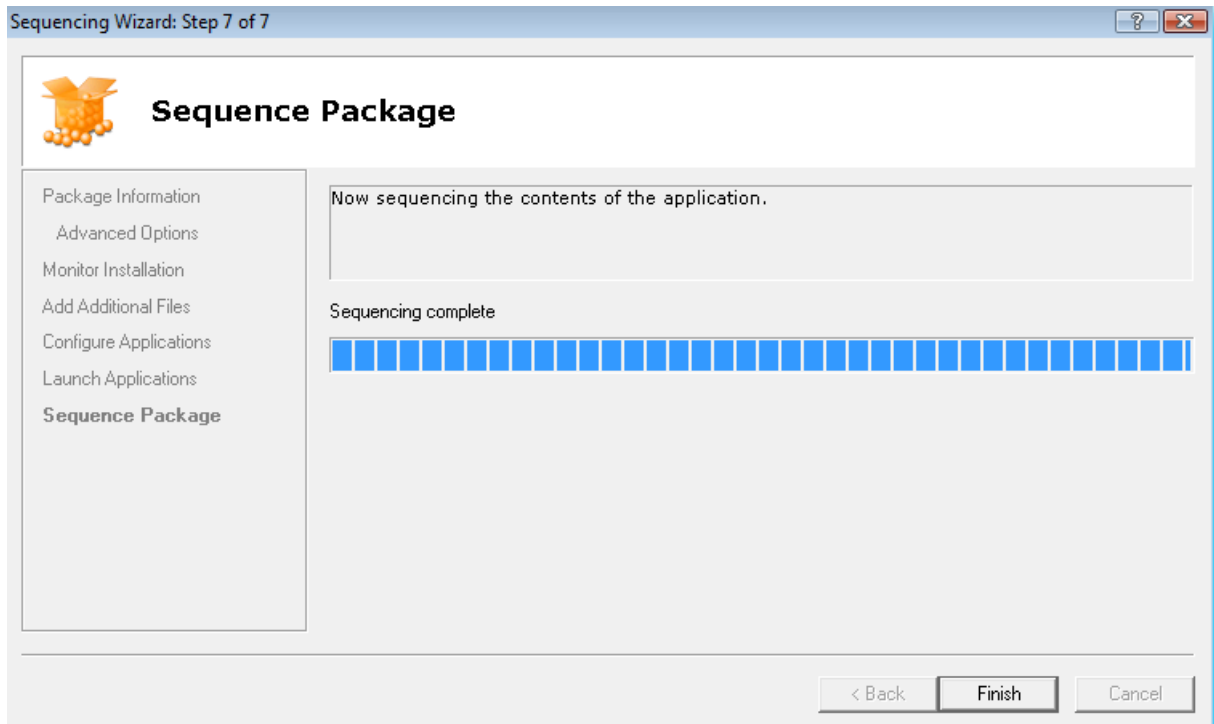
Testen der Applikation



Erfolgreich

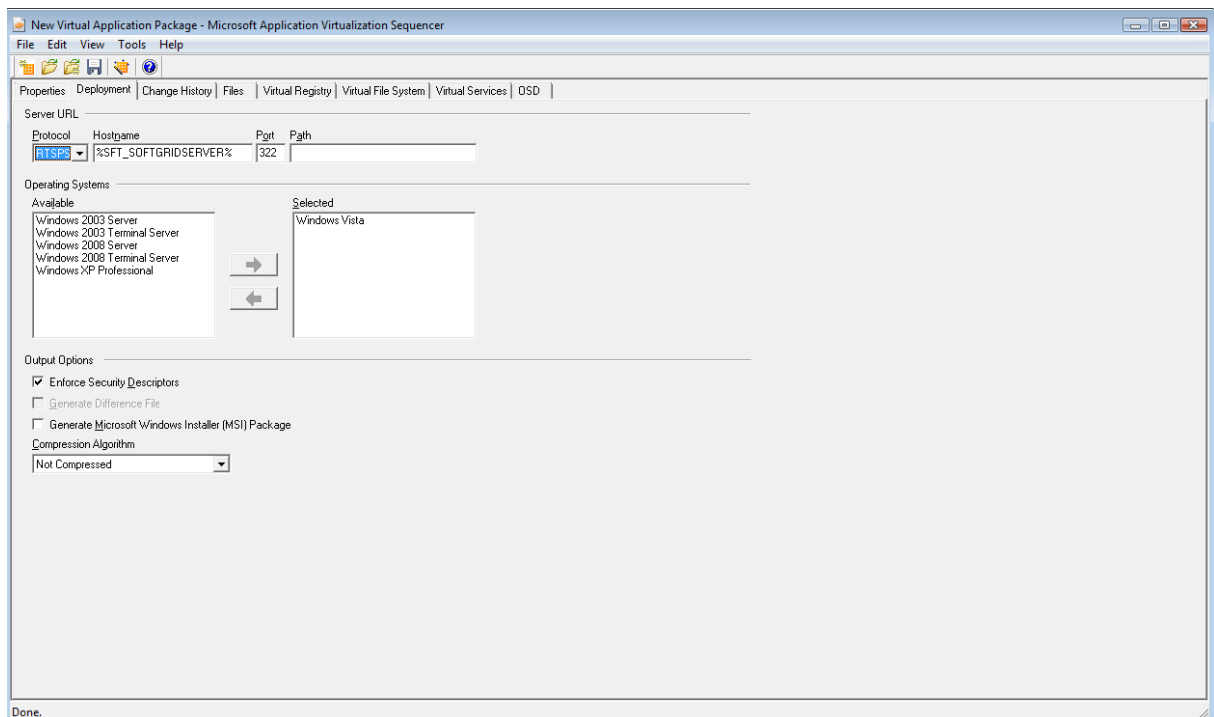


Sequencing Complete

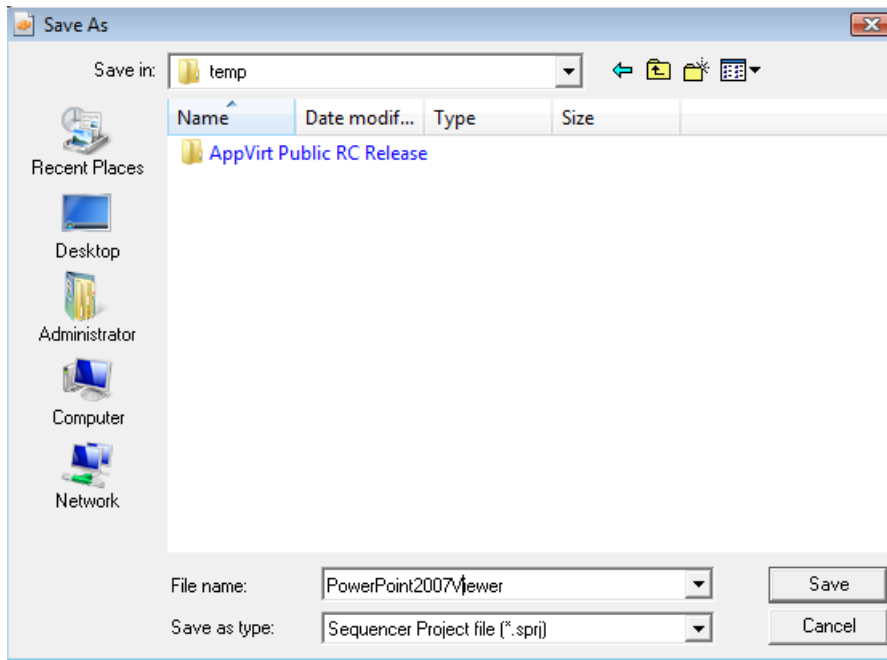


Anpassen des Paketes

Fuer welches Betriebssystem kann die Anwendung verwendet werden

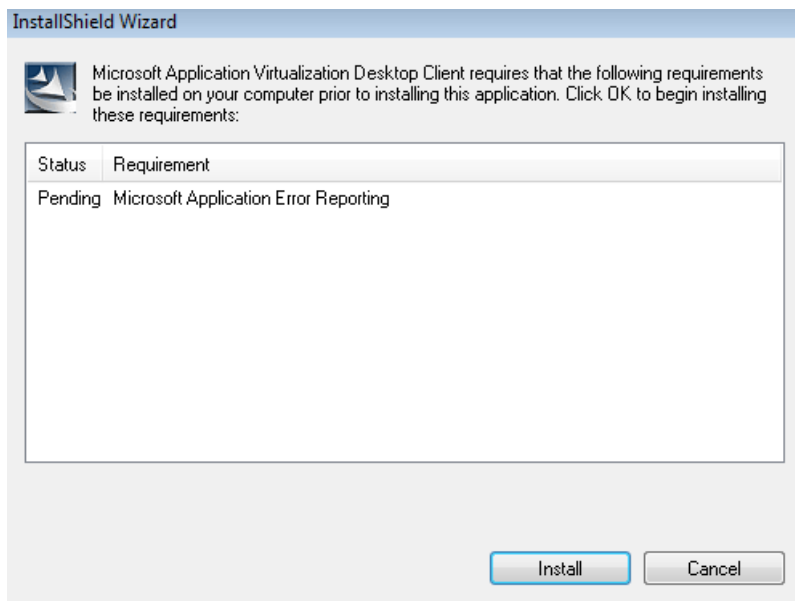


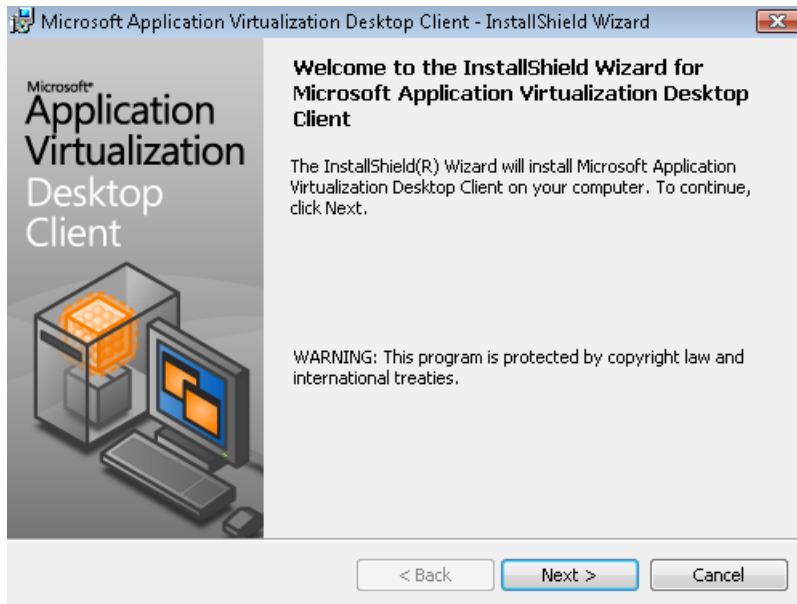
Welche Registry Pfade werden virtualisiert



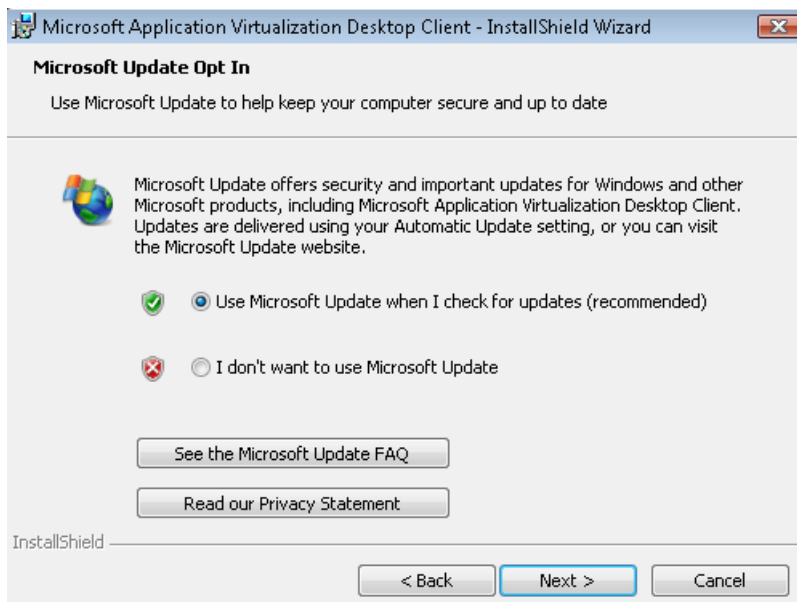
Installation des App-V Clients

Error Reporting muss installiert werden

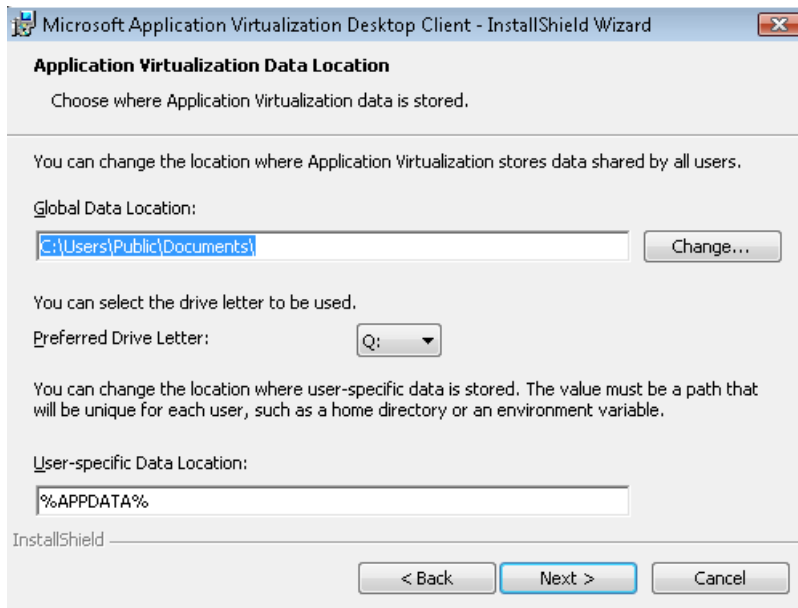




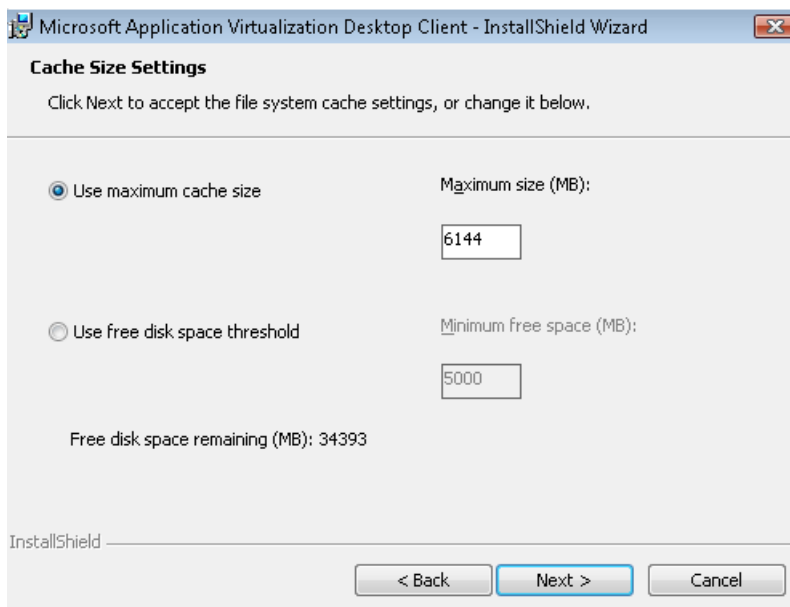
MS Update



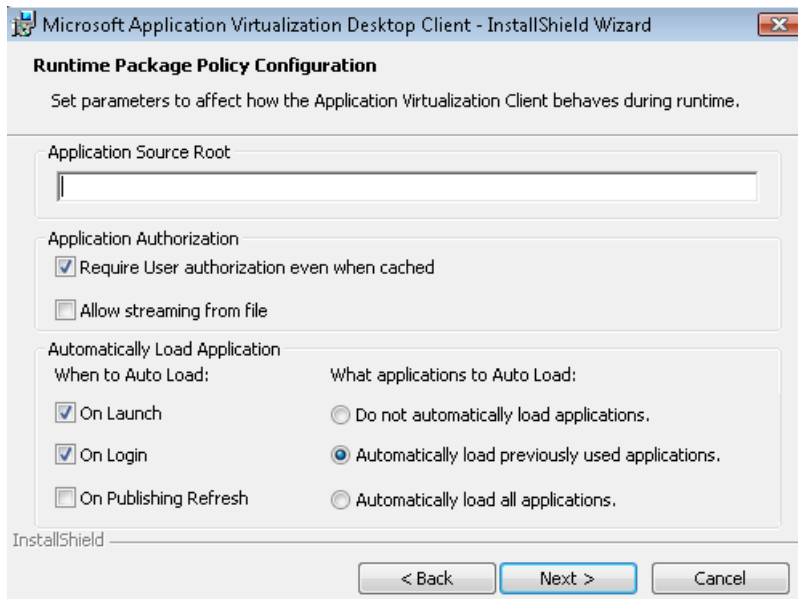
Wo sollen globale Daten gespeichert werden (Vista Client)



File System Cache

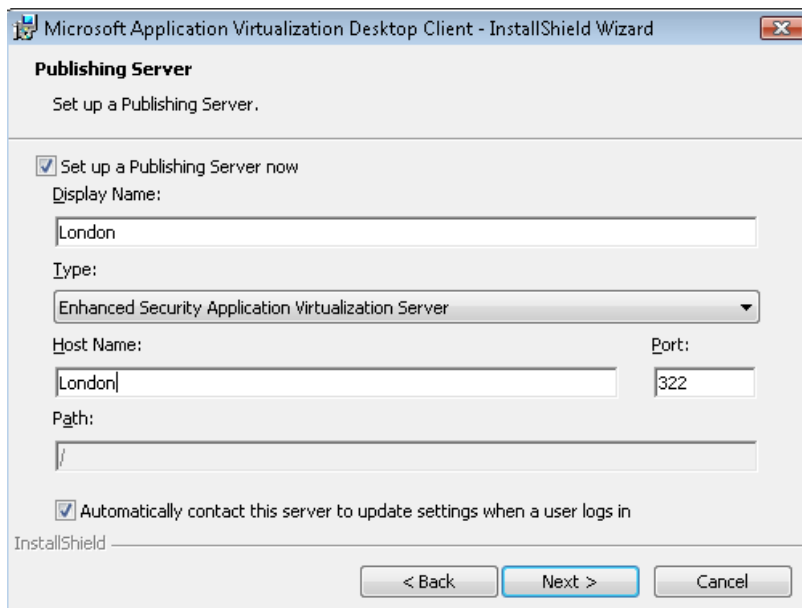


Application Source Root kann OSD Einstellungen auf dem Server ueberschreiben



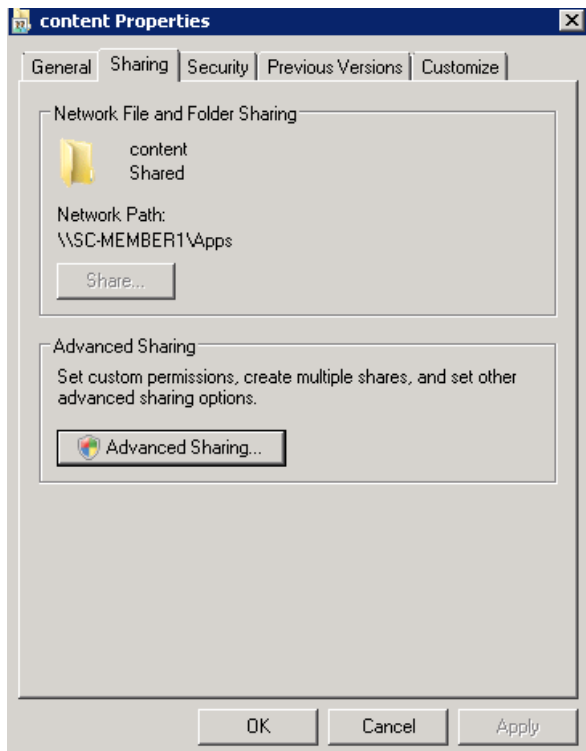
Wenn Refresh konfiguriert wird, muss das Kontrollkaestchen auch aktiviert werden

Angabe des Publishing Servers (APP-V Management / Sequencing Server)



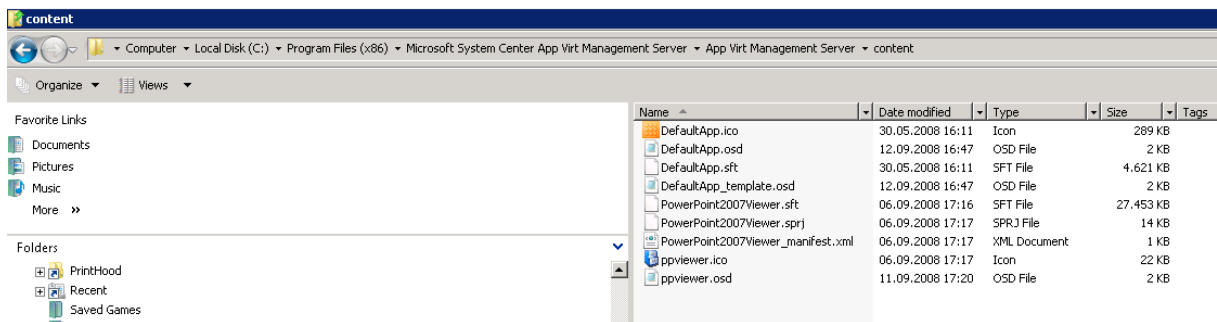
Freigabe des Content Verzeichnis

Das Verzeichnis muss freigegeben werden



Import des Paktes am Management Server

Kopieren des Pakets auf den Server



Importieren des Pakets in der MMC

Auswahl der Server Gruppe und der License Group

New Application Wizard

General Information

Please provide the information to set up your application.

Application Name:
ppviewer

Version:
1.0 Enabled

Description:

OSD Path:
\\SC-MEMBER1\APPS\ppviewer.osd

Icon Path:
\\SC-MEMBER1\APPS\ppviewer.ico

Application License Group:
<none>

Server Group:
Default Server Group

< Back Next > Cancel

Wo soll die Applikation auf dem Client „auftauchen“

New Application Wizard

Published Shortcuts

Indicate whether or not shortcuts should be published for this application.

The Client can be set up to automatically publish shortcuts for applications managed by the Management Console. If you plan to use this feature, please indicate where to publish the shortcuts.

Publish to User's Desktop

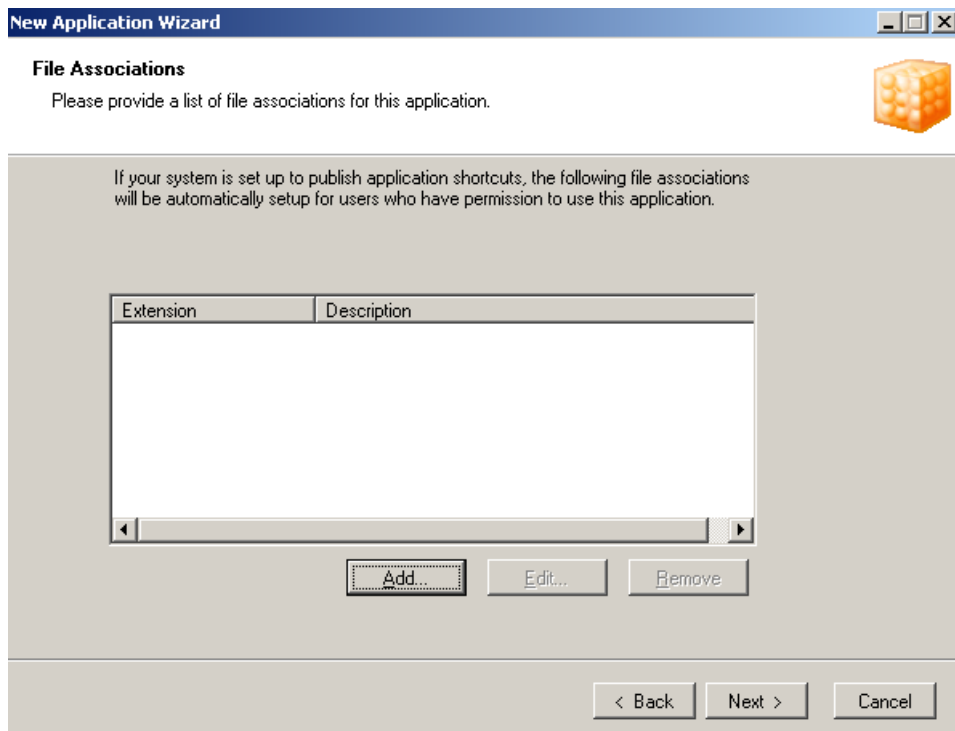
Publish to User's Quick Launch Toolbar

Publish to User's Send To Menu

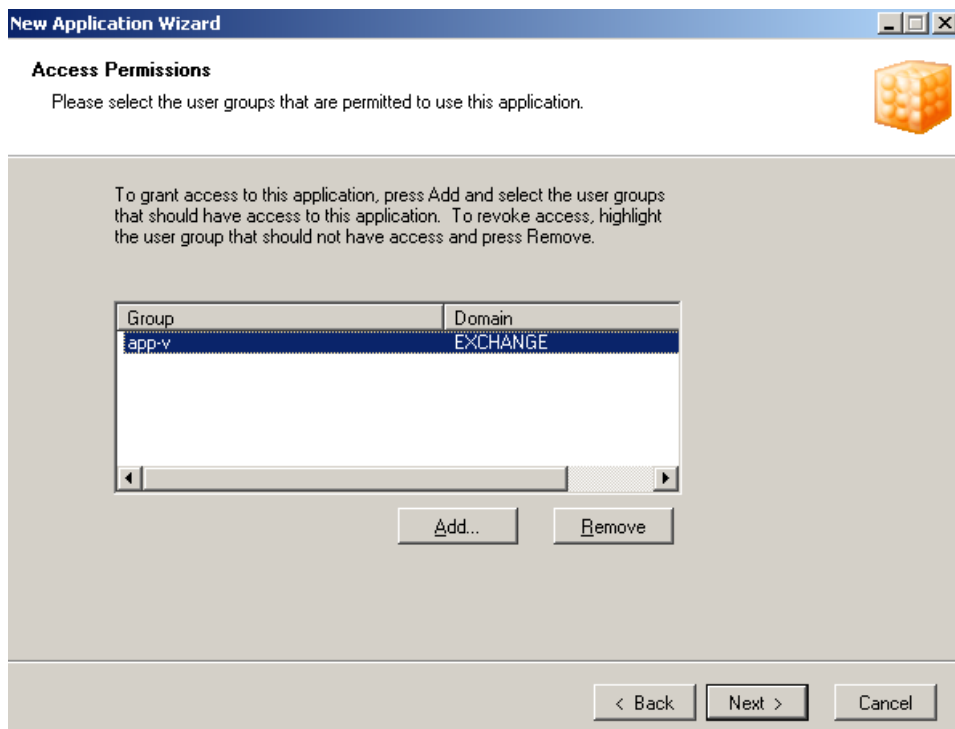
Publish to User's Start Menu

< Back Next > Cancel

Angabe zusätzlicher Dateiextensionen



Welche Gruppe hat Zugriff auf die Applikation



Anpassen der OSD Datei

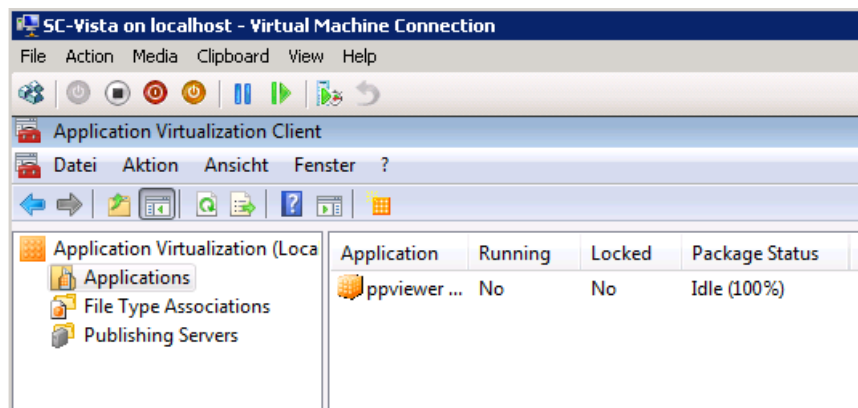
Die OSD Datei fuer das Package muss unter Umstaenden angepasst werden (Servername, RTSP oder RTSPS Port)

```

ppviewer.osd - Notepad
File Edit Format View Help
<?xml version="1.0" standalone="no"?>
<SOFTPKG GUID="98E00D4-30FA-44AD-AFAD-5305730A1D90" NAME="ppv1ewer" VERSION="1.0">
  <IMPLEMENTATION>
    <CODEBASE HREF="RTSP://SC-MEMBER1:554/PowerPoint2007Viewer.sft" GUID="1507D27D-ACF0-4775-82C0-58E5C504D259" PARAMETERS="" FILENAME="PPTV1
    <WORKINGDIR>%SFT_JINT%\PPTV1ewer\VF\S\CSIDL_PROGRAM_FILES\MSECACHE\PPTV1ewer</WORKINGDIR>
    <VIRTUALENV TERMINATECHILDREN="FALSE">
      <ENVLIST/>
    </VIRTUALENV>
    <VM VALUE="win32">
      <SUBSYSTEM VALUE="windows"/>
    </VM>
    <OS VALUE="winVista"/>
  </IMPLEMENTATION>
  <DEPENDENCY>
    <CLIENTVERSION VERSION="4.5.0.0"/>
  </DEPENDENCY>
  <PACKAGE_NAME="PowerPoint2007Viewer"/>
  <ABSTRACT/>
  <MGMT_SHORTCUTLIST>
    <SHORTCUT LOCATION="%CSIDL_STARTMENU%" FILENAME="" OVERRIDEN="TRUE" DISPLAY="ppv1ewer" ICON="%SFT_MIME_SOURCE%/PowerPoint2007Viewer Icor
  </MGMT_SHORTCUTLIST>
  <MGMT_FILEASSOCIATIONS>
    <PROGIDLIST/>
    <FILEEXTENSIONLIST/>
  </MGMT_FILEASSOCIATIONS>
</SOFTPKG>

```

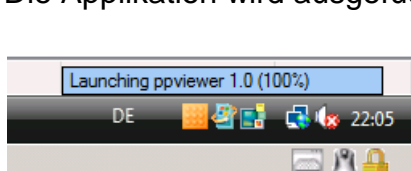
Applikation auf dem Client in der Application Virtualization Console



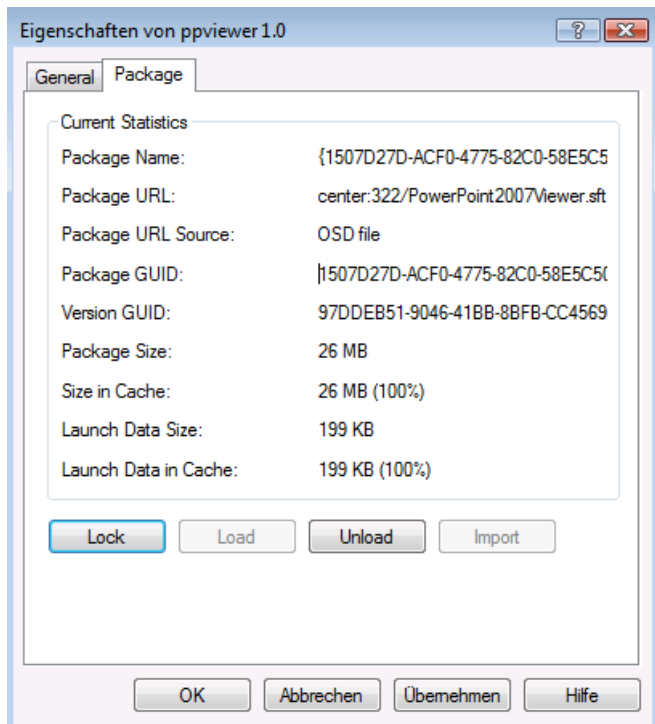
Die Applikation wird unter anderem als Shortcut auf dem Desktop abgelegt



Die Applikation wird ausgeführt



Paketeigenschaften im Client



Die Applikation kann jetzt verwendet werden.

Server Log

Das SFT-Server Log gibt Auskunft ueber den Zustand des APP-V Server

```
sft-server.log - Notepad
File Edit Format View Help
[2008-09-06 20:42:15.173] LONDON 1724 4660 SW_LWSDispatcher::fini - - - 0 41219 "successfully shut down
Microsoft System Center Application Virtualization Streaming Server version 4.5.0.1305 (1724)
[2008-09-06 20:42:15.523] LONDON 1724 1712 SW_MessageHandler::close - - - 5 65535 "Shutdown complete."
[2008-09-06 20:42:15.663] LONDON 1232 1592 SW_MessageHandler::close - - - 5 65535 "Shutdown complete."
[2008-09-06 20:42:15.683] LONDON 5356 1832 SW_MessageHandler::close - - - 5 65535 "Shutdown complete."
[2008-09-06 20:42:15.693] LONDON 4840 1720 SW_MessageHandler::close - - - 5 65535 "Shutdown complete."
[2008-09-06 20:42:15.703] LONDON 1964 1628 SW_MessageHandler::close - - - 5 65535 "Shutdown complete."
[2008-09-06 20:42:15.713] LONDON 1920 1948 SW_MessageHandler::close - - - 5 65535 "Shutdown complete."
[2008-09-06 21:48:25.850] - 3476 3644 SW_MessageHandler::open - - - 5 65535 "Initialization complete."
[2008-09-06 21:48:27.152] - 1540 3464 SW_MessageHandler::open - - - 5 65535 "Initialization complete."
[2008-09-06 21:48:27.272] - 3200 3320 SW_MessageHandler::open - - - 5 65535 "Initialization complete."
[2008-09-06 21:48:27.452] - 3500 692 SW_MessageHandler::open - - - 5 65535 "Initialization complete."
[2008-09-06 21:48:27.733] - 3300 892 SW_MessageHandler::open - - - 5 65535 "Initialization complete."
[2008-09-06 21:48:27.843] - 532 3652 SW_MessageHandler::open - - - 5 65535 "Initialization complete."
[2008-09-06 21:48:27.943] LONDON 3476 3644 SW_LWSDispatcher::init - - - 0 41217 "successfully started
Microsoft System Center Application Virtualization Streaming Server version 4.5.0.1305 (3476)
[2008-09-06 21:58:32.903] LONDON 3476 3644 SW_LWSDispatcher::fini - - - 0 41219 "successfully shut down
Microsoft System Center Application Virtualization Streaming Server version 4.5.0.1305 (3476)
[2008-09-06 21:58:33.083] LONDON 3476 3484 SW_MessageHandler::close - - - 5 65535 "Shutdown complete."
[2008-09-06 21:58:33.293] LONDON 3200 3320 SW_MessageHandler::close - - - 5 65535 "Shutdown complete."
[2008-09-06 21:58:33.293] LONDON 3300 892 SW_MessageHandler::close - - - 5 65535 "Shutdown complete."
[2008-09-06 21:58:33.303] LONDON 3500 692 SW_MessageHandler::close - - - 5 65535 "Shutdown complete."
[2008-09-06 21:58:33.303] LONDON 1540 3464 SW_MessageHandler::close - - - 5 65535 "Shutdown complete."
[2008-09-06 21:58:33.303] LONDON 532 3652 SW_MessageHandler::close - - - 5 65535 "Shutdown complete."
[2008-09-06 22:03:12.382] - 1184 1224 SW_MessageHandler::open - - - 5 65535 "Initialization complete."
[2008-09-06 22:03:14.184] - 1468 1472 SW_MessageHandler::open - - - 5 65535 "Initialization complete."
[2008-09-06 22:03:14.184] - 1460 1464 SW_MessageHandler::open - - - 5 65535 "Initialization complete."
[2008-09-06 22:03:14.194] - 1452 1456 SW_MessageHandler::open - - - 5 65535 "Initialization complete."
[2008-09-06 22:03:14.264] - 1476 1480 SW_MessageHandler::open - - - 5 65535 "Initialization complete."
[2008-09-06 22:03:14.284] - 1444 1448 SW_MessageHandler::open - - - 5 65535 "Initialization complete."
[2008-09-06 22:03:14.665] LONDON 1184 1224 SW_LWSDispatcher::init - - - 0 41217 "successfully started
Microsoft System Center Application Virtualization Streaming Server version 4.5.0.1305 (1184)
```

Hiermit endet Part 1 des Artikels. Part II beschreibt erweiterte Optionen, Reporting, erweitertes Packing uvm.