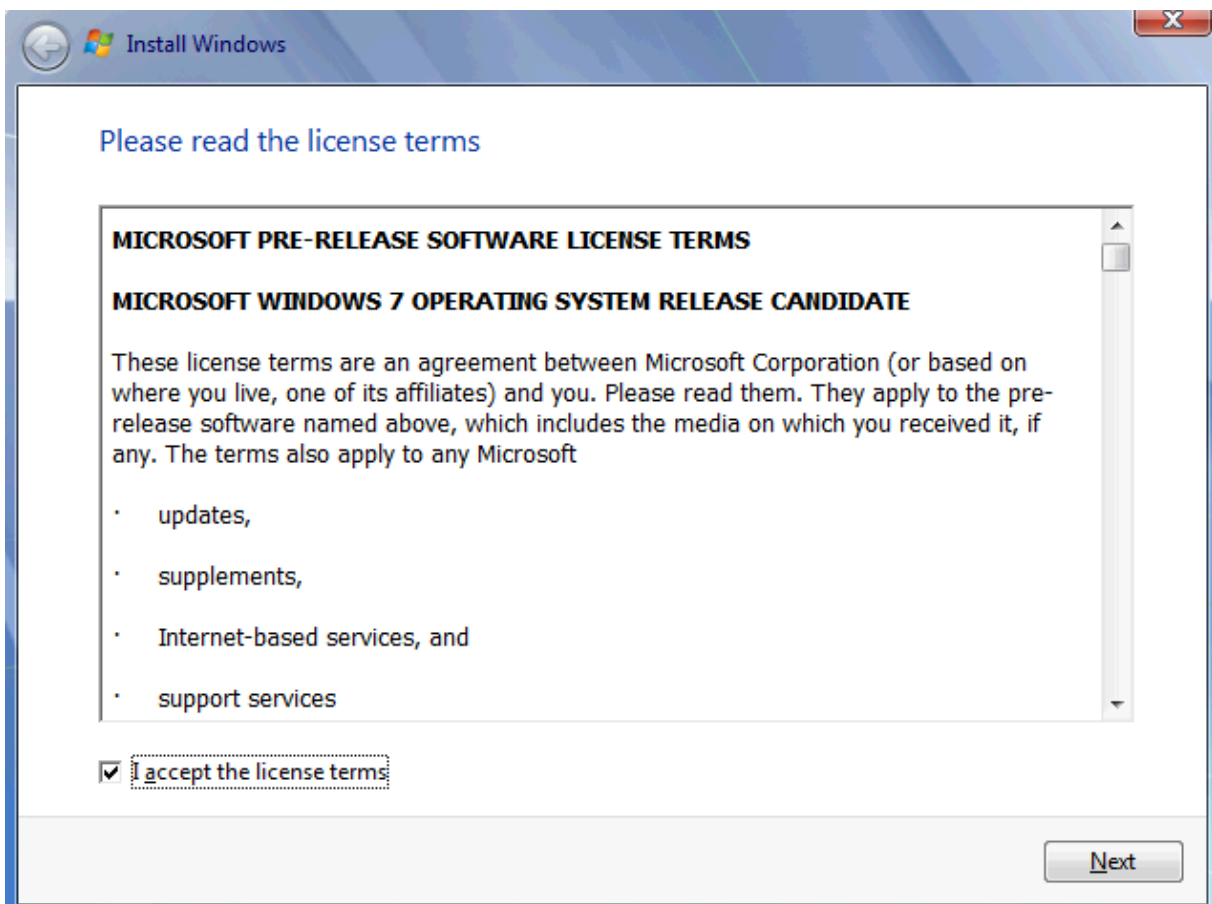
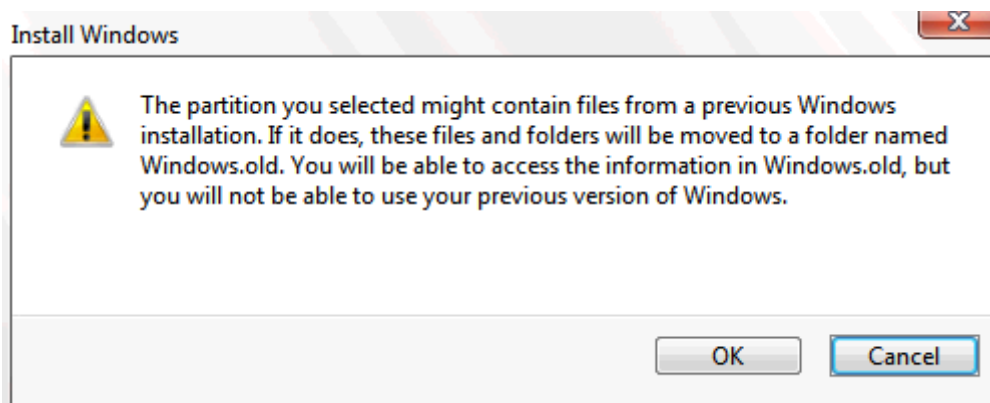
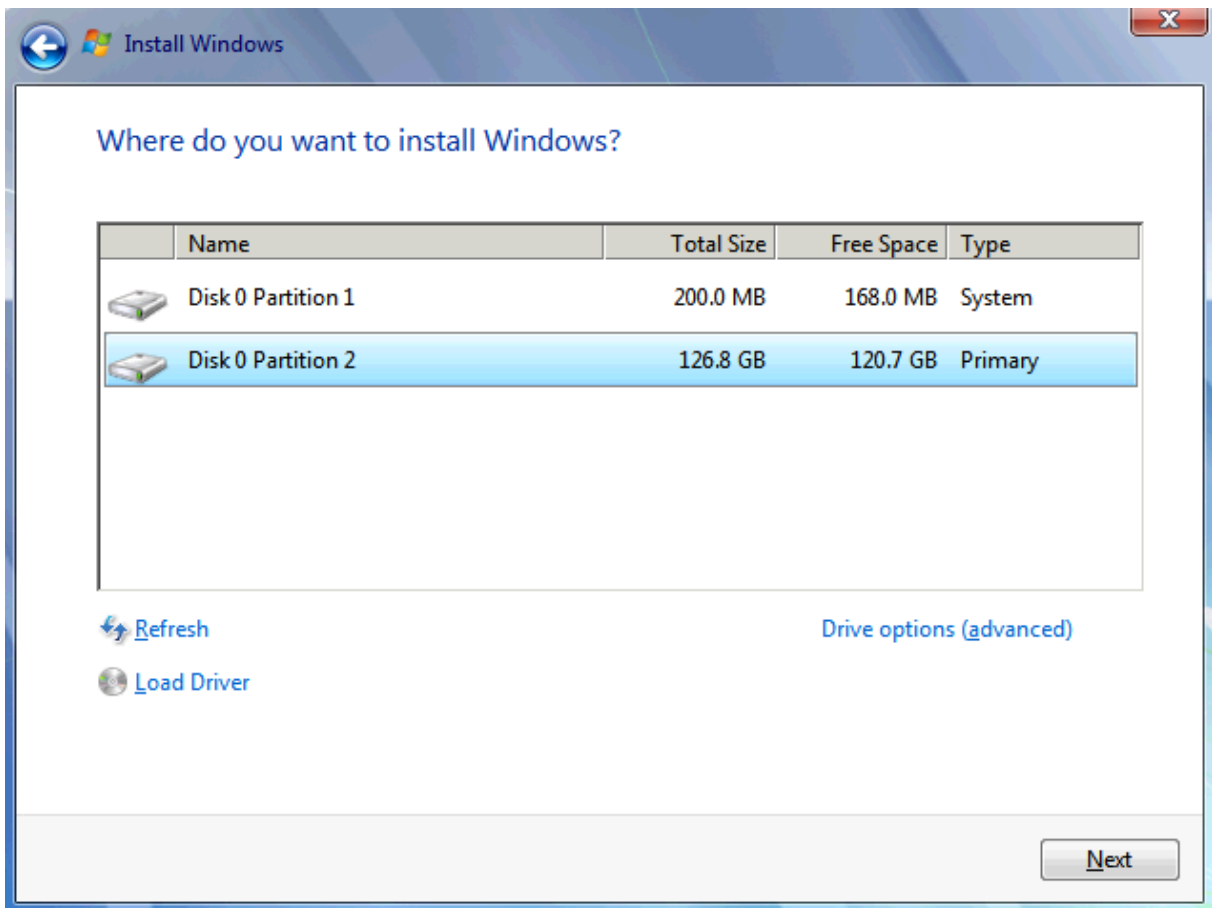


Windows 7 RC Installation







Installing Windows...

That's all the information we need right now. Your computer will restart several times during installation.

- ✓ Copying Windows files
- Expanding Windows files (0%) .**
- Installing features
- Installing updates
- Completing installation



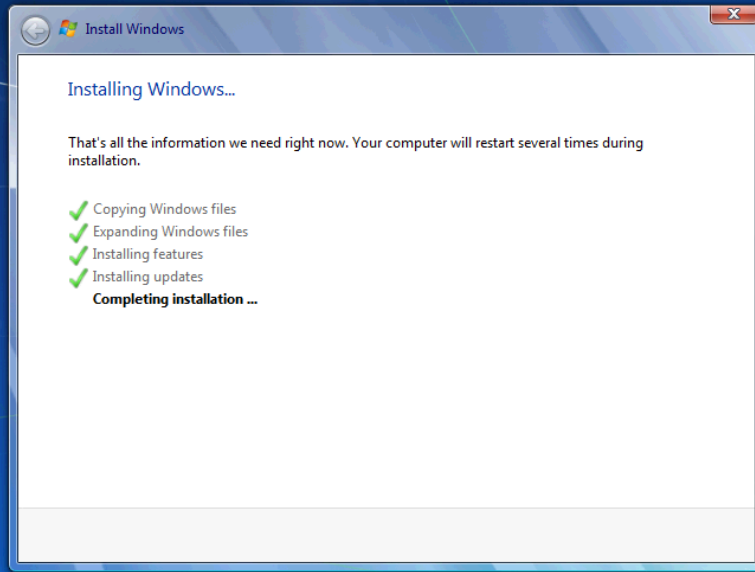
Starting Windows

© Microsoft Corporation



Setup is updating registry settings

© Microsoft Corporation



1


Collecting information

2

Installing Windows

Setup will continue after restarting your computer






Starting Windows

© Microsoft Corporation

Setup is preparing your computer for first use



Set Up Windows

Windows 7 Ultimate

Choose a user name for your [account](#) and name your computer to distinguish it on the network.

Type a user name (for example, John):

Type a [computer name](#):

Copyright © 2009 Microsoft Corporation. All rights reserved.

Next

Set Up Windows

Set a password for your account

Creating a password is a smart security precaution that helps protect your user account from unwanted users. Be sure to remember your password or keep it in a safe place.


Type a password (recommended):
••••••••

Retype your password:
••••••••

Type a password hint (required):
Wuesstet Ihr wohl gerne!

Choose a word or phrase that helps you remember your password.
If you forget your password, Windows will show you your hint.

Next

 Set Up Windows

Type your Windows product key

You can find your Windows product key on a label included with the package that came with your copy of Windows. The label might also be on your computer case. Activation pairs your product key with your computer.

The product key looks similar to this:
PRODUCT KEY: XXXXX-XXXXX-XXXXX-XXXXX-XXXXX


(dashes will be added automatically)

Automatically activate Windows when I'm online

[What is activation?](#)
[Read our privacy statement](#)

Set Up Windows

Help protect your computer and improve Windows automatically

-  **Use recommended settings**
Install important and recommended updates, help make Internet browsing safer, check online for solutions to problems, and help Microsoft improve Windows.
-  **Install important updates only**
Only install security updates and other important updates for Windows.
-  **Ask me later**
Until you decide, your computer might be vulnerable to security threats.

[Learn more about each option](#)

When you use recommended settings or install updates only, some information is sent to Microsoft. The information is not used to identify you or contact you. To turn off these settings later, search for 'Turn off recommended setting' in Help and Support. [Read the privacy statement](#)

Set Up Windows

Review your time and date settings


Time zone:
(UTC+01:00) Amsterdam, Berlin, Bern, Rome, Stockholm, Vienna

Automatically adjust clock for Daylight Saving Time

Date:


April 2009						
Mo	Tu	We	Th	Fr	Sa	Su
30	31	1	2	3	4	5
6	7	8	9	10	11	12
13	14	15	16	17	18	19
20	21	22	23	24	25	26
27	28	29	30	1	2	3
4	5	6	7	8	9	10

Time:




20:52:09


Next


 **Set Up Windows**

Select your computer's current location

This computer is connected to a network. Windows will automatically apply the correct network settings based on the network's location.

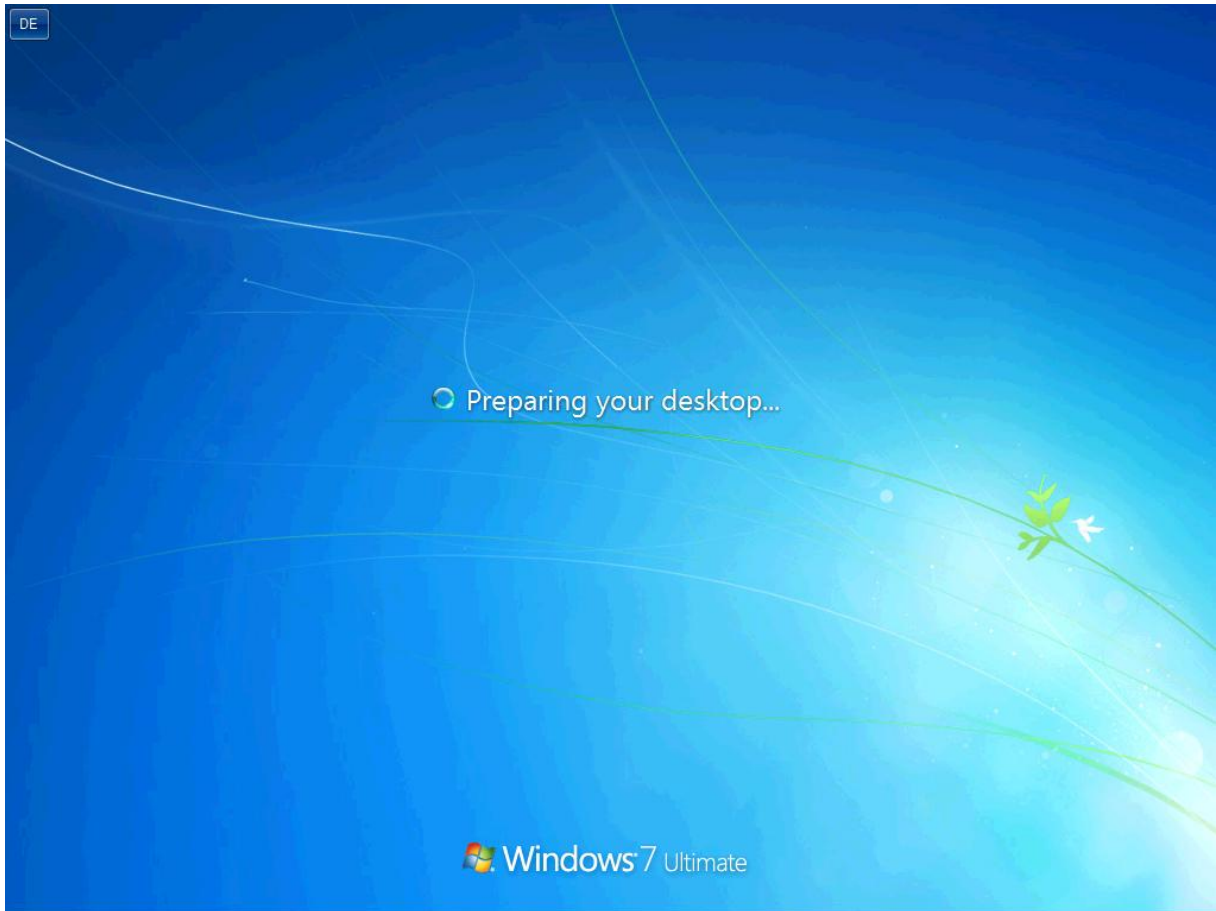
 **Home network**
If all the computers on this network are at your home, and you recognize them, this is a trusted home network. Don't choose this for public places such as coffee shops or airports.

 **Work network**
If all the computers on this network are at your workplace, and you recognize them, this is a trusted work network. Don't choose this for public places such as coffee shops or airports.

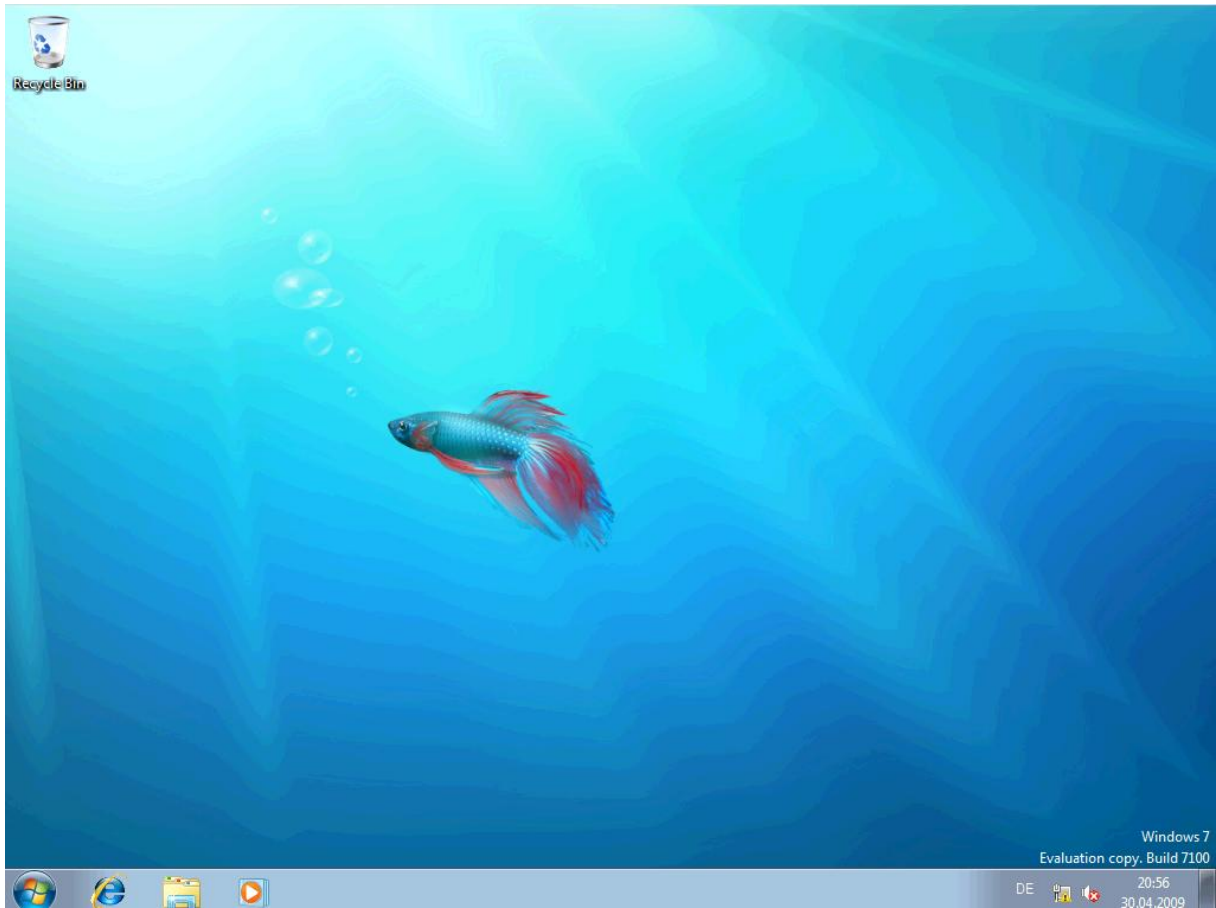
 **Public network**
If you don't recognize all the computers on the network (for example, you're in a coffee shop or airport, or you have mobile broadband), this is a public network and is not trusted.

If you aren't sure, select Public network.





Fertig: DER FISCH IST NOCH DA :-)



Ah, ein Update gibt es auch schon. Die Tradition wird gewahrt


Control Panel > System and Security > Windows Update

Search Control Panel

Control Panel Home

- Check for updates
- Change settings
- View update history
- Restore hidden updates
- Updates: frequently asked questions

Windows Update

 **Downloading updates...**

Download progress bar (78% complete)

Downloading 1 update (11,2 MB total, 78% complete)

[Stop download](#)

Most recent check for updates: Today at 21:05
Updates were installed: Never
You receive updates: For Windows only.

[Get updates for other Microsoft products. Find out more](#)

See also
Installed Updates

DE 21:08
30.04.2009